



Where Georgia comes together.

AGENDA
WORK SESSION
OF THE PERRY CITY COUNCIL
June 17, 2019
5:00 P.M.

1. Call to Order: Mayor Pro Tempore Randall Walker, Presiding Officer.
2. Roll:
3. Items of Review/Discussion: Mayor Pro Tempore Randall Walker
 - 3a. Appearance(s):
 1. Presentation relative to Heritage and Legacy Parks – Mr. Scott Haller, Parrish Construction.
 - 3b. Office of the City Manager
 1. Municipal Court facility – Mr. L. Gilmour.
 2. Request for hearing officer – Mr. L. Gilmour.
 3. Bidding authorization – Mr. L. Gilmour.
 4. Follow up relative to cooler usage – Mr. L. Gilmour.
 5. Discuss implementation of liquor excise tax – Mr. L. Gilmour.
 - 3c. Department of Community Development
 1. Discussion of fees for IN-REM process – Mr. B. Wood.
4. Council Member Items:
5. Department Head/Staff Items:
6. Adjourn.



City Parks Projects



Perry
Where Georgia comes together.

PARISH
CONSTRUCTION GROUP



Heritage Park





Heritage Park

TSW DESIGN

PHASE 1 ESTIMATE

\$858,483.00

AMENITIES INCLUDED:

- GRASS PARKING AREAS
- OVAL SLOPED LAWN WITH SIDEWALKS
- PAVED ENTRY DRIVE WITH STAGE PARKING AREA



PHASE: ONE

TSW



PARISH
CONSTRUCTION GROUP



Heritage Park

Previous Bid Price

PHASE 1 BID PRICE

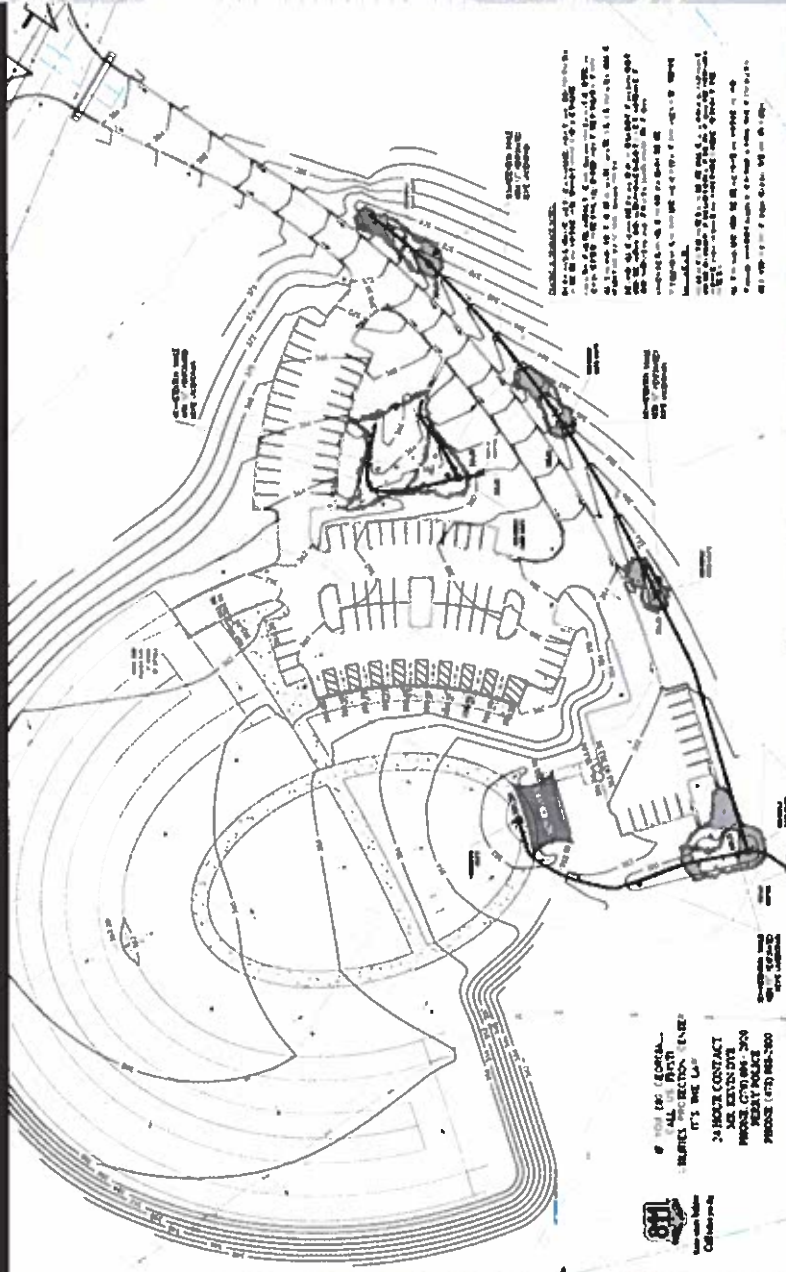
\$1,676,654.00

PREVIOUS BID PRICE: \$1,579,910*
REQUIRED IMPROVEMENTS: \$96,744

*Bid price based on TSW's revised Construction Documents package.

AMENITIES INCLUDED:

- PAVED PARKING AREAS
- OVAL SLOPED LAWN WITH SIDEWALKS
- PAVED ENTRY DRIVE WITH PARKING AREA
- STAGE
- SHADE SAIL
- BIOSWALES
- SLOPED GRASS PARKING LANDSCAPE LAWN



8 HOURS GENERAL
 ALL THE BEST
 IMPROVE THE LIFE
 IT'S THE WAY
 24 HOUR CONTACT
 MR. KEVIN DYE
 PHONE: (770) 485-2400
 MOBILE: (770) 485-2400



Where Georgia comes together.



Heritage Park

Required Elements of Construction (\$96,744)

- Redesign of parking areas to allow for required turning clearance of emergency response vehicles
- Additional required fire hydrant by stage area
- Recreate all hydrologic and hydraulic calculations
- Conduct geotechnical investigation and report
- Addition of power to the site for stage and site lighting
- Additional infrastructure in preparation for future phases



Heritage Park

GWES Redesign
PHASE 1 ESTIMATE –
PARRISH CONSTRUCTION
\$1,338,841.00*

REDUCTION FROM PREVIOUS BID PRICING: \$337,813.00
*INCLUDES REQUIRED IMPROVEMENTS (VALUED AT \$96,744)

AMENITIES INCLUDED:

- PAVED PARKING AREAS
- OVAL SLOPED LAWN WITH SIDEWALKS
- PAVED ENTRY DRIVE WITH PARKING AREA
- STAGE
- SHADE SAIL
- RETENTION OF LARGE LIVE OAK TREES
- STORM SYSTEM PIPING AND DETENTION POND
- SITE LIGHTING AND ELECTRICAL FOR STAGE AREA
- UTILITY CONNECTIONS FOR FUTURE PHASES





Heritage Park

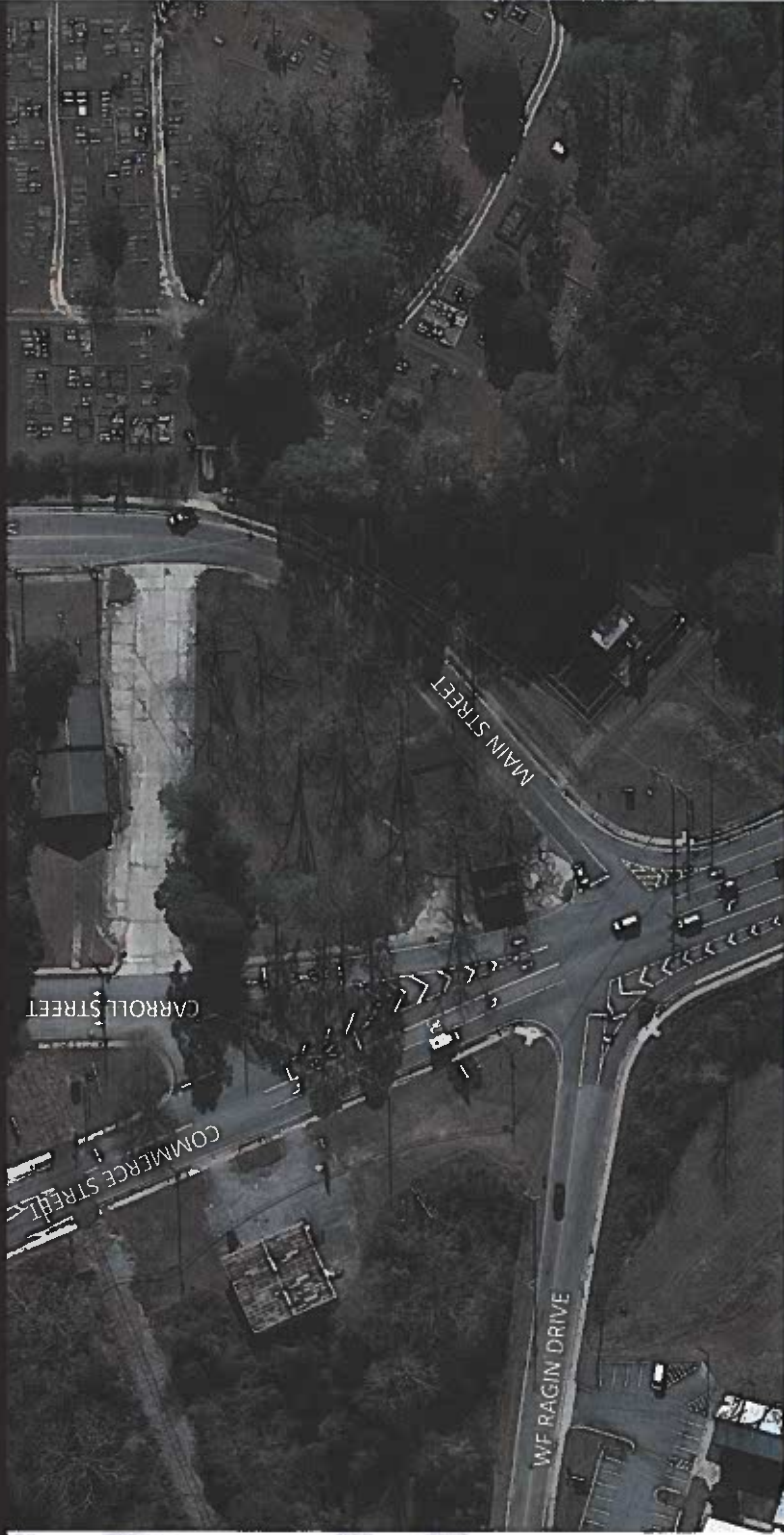
Deductions from TSW's Previous Design

- Bioswales (5 ea) were replaced with required storm water and water piping.
- Reduced overall landscaping and irrigation
- Site was redesigned to save historic oak trees and to reduce the amount of fill dirt required for site grading .
- Reduced overall site paving. Replaced asphalt drive and stage area parking with GAB. All curb and gutter was removed.
- Concrete sidewalks increased with site redesign.
- Erosion control cost increased from original pricing due to an increase in overall acreage disturbed.
- Eliminated tiered parking area





Legacy Park



 **Perry**
Where Georgia comes together.

PARISH
CONSTRUCTION GROUP



Legacy Park

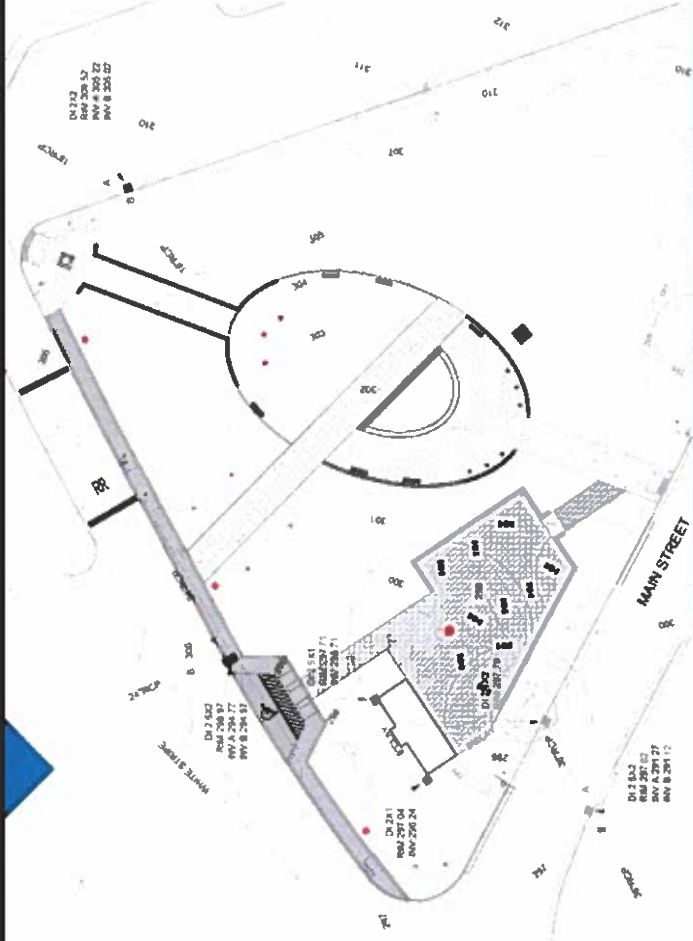
TSW DESIGN

PHASE 1 ESTIMATE

\$668,777.00

AMENITIES INCLUDED:

- INFINITY EDGE REFLECTION POOL
- TREE LINED OVAL LAWN
- GRANITE MEMORIAL WALLS
- CRUSHED GRANITE PLAZA WITH SEATING
- FLAG POLES WITH UPLIGHTING
- ADA COMPLIANT PARKING
- GRANITE RETAINING WALLS
- LANDSCAPING AND IRRIGATION



PHASE 1: SITE LAYOUT PLAN

PARISH
CONSTRUCTION GROUP

Perry
Where Georgia comes together.



Legacy Park

Previous Bid Price

PHASE 1 BID PRICE

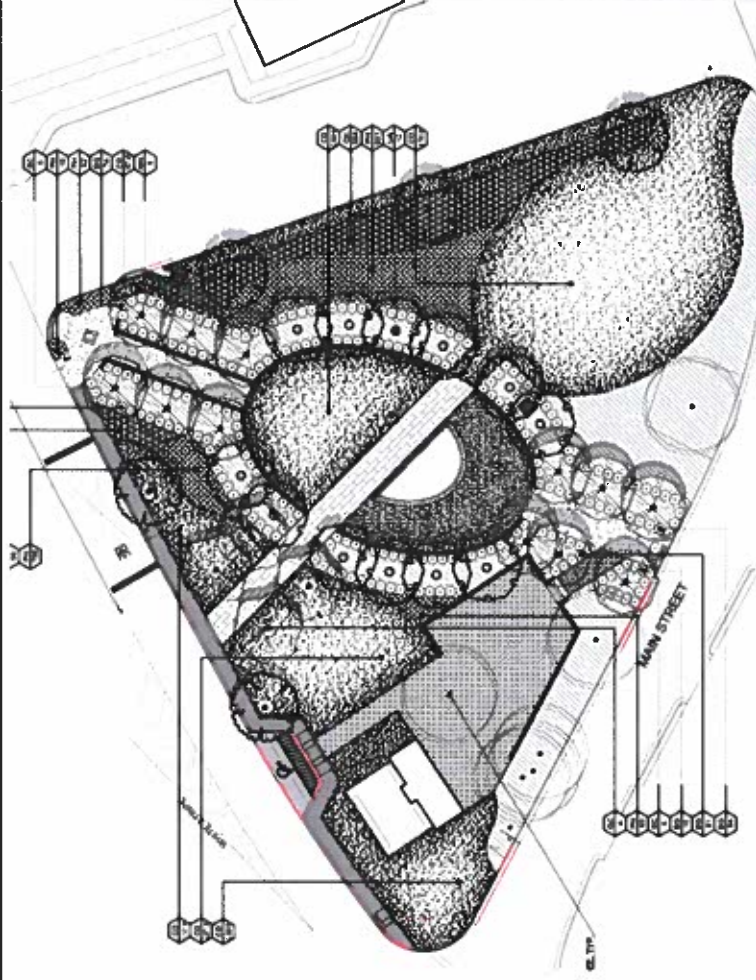
\$1,285,556.00

PREVIOUS BID PRICE: \$1,195,906*
REQUIRED IMPROVEMENTS: \$89,650

*Bid price based on TSW's Construction Documents package.

AMENITIES INCLUDED:

- INFINITY EDGE REFLECTION POOL
- TREE LINED OVAL LAWN
- GRANITE MEMORIAL WALLS
- CRUSHED GRANITE PLAZA WITH SEATING
- FLAG POLES WITH UPLIGHTING
- ADA COMPLIANT PARKING
- GRANITE RETAINING WALLS
- LANDSCAPING AND IRRIGATION



Where Georgia comes together.

PARISH
CONSTRUCTION GROUP



Legacy Park

Required Elements of Construction (\$89,650)

- Demolition of existing storm drain and structure that runs through the center of the site
- New storm piping and structures to allow for proper site drainage
- Demolition of existing Carroll Street curb and (10' dimension within roadway) and install new curb and concrete paving for proper stormwater flow
- Backfill with dirt behind new curb to maintain a level surface





Legacy Park



GWES Redesign

PHASE 1 ESTIMATE--

PARRISH CONSTRUCTION \$865,719.00*

REDUCTION FROM PREVIOUS BID PRICING: \$419,837.00
*INCLUDES REQUIRED IMPROVEMENTS (VALUED AT \$89,650)

AMENITIES INCLUDED:

- WATER FEATURE
- TREE LINED OVAL LAWN
- BRICK PAVER SIDEWALK AND ENTRY WALKWAYS
- CONCRETE PLAZA WITH SEATING
- FLAG POLES WITH UPLIGHTING
- ADA COMPLIANT PARKING
- LANDSCAPING AND IRRIGATION





Legacy Park

Deductions from TSW's Previous Design

- Reflection pool construction revised from granite to gunite
- Reduced overall landscaping and irrigation by 50%
- Paving material changes: walkways revised from concrete to brick, seating plaza revised from crushed granite to concrete, eliminated steps and handrails
- Removed retaining walls
- Allocated granite memorial walls to Phase 2
- Reduced limits of disturbance to under 1 acre
- Revised storm system from bioswale to necessary structures and piping
- Reduced electrical scope to site lighting, pool accessories, infrastructure for future phases, and flag pole lights



Where Georgia comes together.

PARISH
CONSTRUCTION GROUP



Legacy Park

Deductive Alternate – Cost Estimate

- Landscaping and Irrigation \$44,000
- Reinstallation of concrete around old gas station \$20,000

Additive Alternate – Cost Estimate

Reimbursable Allowances

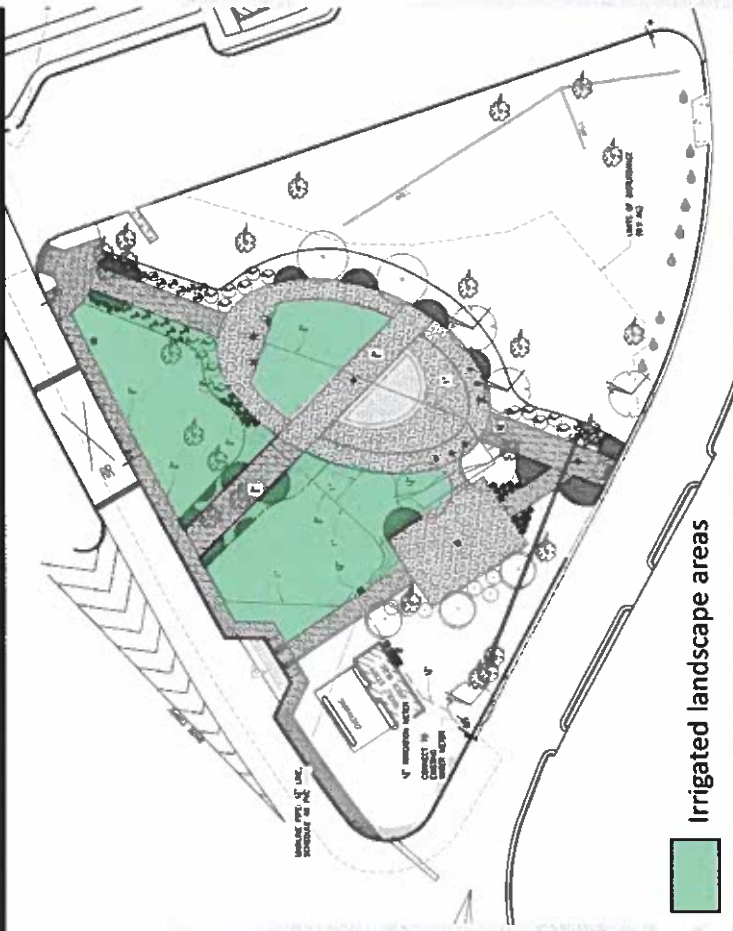
- Infinity Edge Reflecting Pool \$150,000
(Pondless Water Feature Option: \$70,000)
- Furniture, fixtures, and equipment (FFE) \$35,000

*Total Possible Savings from Alt/Allowances= \$229,000

*Possible Overall Savings= \$648,837

Revised project budget to exclude all alternates and allowances:

\$636,719





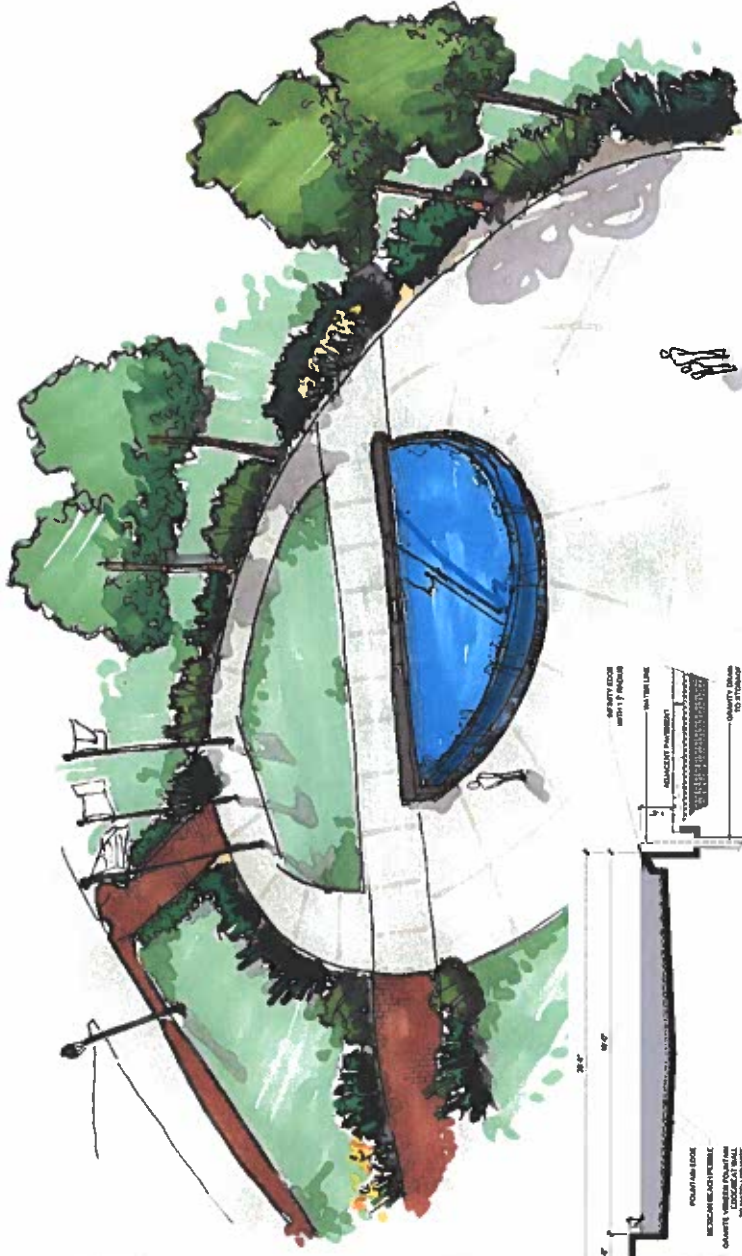
Legacy Park



Infinity edge reflection pool



Savings option: pondless pool



Proposed perspective: infinity edge pool



1) INFINITY EDGE REFLECTIVE POOL AT BROWN

Proposed section: infinity edge pool





Total Budget Numbers

Previous Bid Pricing

Heritage Park	\$1,579,910
Required Improvements	\$96,744
Legacy Park	\$1,195,906
Required Improvements	<u>\$89,650</u>
	\$2,962,210

Current Parrish Estimates

Including required improvements and all proposed alternates and allowances

Heritage Park	\$1,338,841
Legacy Park	<u>\$865,719</u>
	\$2,204,560 (\$757,650 Reduction from previous bid)

Excluding all proposed alternates and allowances

Heritage Park	\$1,136,947
Legacy Park	<u>\$636,719</u>
	\$1,773,666 (\$1,188,544 Reduction from previous bid)



Where Georgia comes together.

OFFICE OF THE CITY MANAGER

MEMORANDUM

TO: Council

FROM: Lee Gilmour, City Manager

DATE: June 7, 2019

REFERENCE: Municipal Court facility

The Municipal Court of the City of Perry is experiencing an ever increasing caseload. Recent federal and state laws have added to the court's participants. Office space is required for the judge and associate judges, court staff, solicitor staff, defense attorney meeting areas, client conference areas, and pre-court meeting areas.

The current position of the legal and social communities is to separate law enforcement functions from court functions.

The original plan was to move the court into the current council meeting room which is in the same building to be used by the Perry Police Department. The secondary plan was to add the court function to the new city hall.

Based on recent experience with Municipal Court meeting in City Hall, the Administration proposes Council amend its strategic space plan to construct a stand-alone facility for Municipal Court between the current City Hall and Public Safety Building. The City owns the property, parking is available, and the proper amount of space can be provided for future growth.



Where Georgia comes together.

OFFICE OF THE CITY MANAGER

MEMORANDUM

TO: Council

FROM: Lee Gilmour, City Manager

DATE: June 11, 2019

REFERENCE: Request for hearing officer

An employee is appealing a final adverse action of termination. Per Article IX, Section 10 (a), the Administration requests Council appoint Mr. Tom Richardson of Chambliss Higdon Richardson Katz Griggs, LLP. Mr. Richardson has been used before as a hearing officer.



Where Georgia comes together.

OFFICE OF THE CITY MANAGER

MEMORANDUM

TO: Council

FROM: Lee Gilmour, City Manager

DATE: June 6, 2019

REFERENCE: Bidding authorization

The Administration requests Council authorize bidding for the demolition of the structures for the new city hall with the church and the Police Services Building as alternates. The church is listed as an alternate in the event the congregation cannot move into its new facility.



Where Georgia comes together.

Department of Economic Development

To: Mr. Lee Gilmour, City Manager
CC: Robert Smith, Assistant City Manager
From: Anya Turpin, Special Events Coordinator
Date: June 3, 2019
Re: Research Request

In an effort to contribute to the conversation with Council concerning coolers at special events, I have contacted each of the Georgia cities as listed on your request. After successfully connecting with employees from several of these cities, I was able to obtain the following information regarding coolers and alcoholic beverages:

- 1) Several cities cited enacting a size limitation on coolers brought into the event footprint. Coolers were checked briefly at entrance points to ensure they met the size restrictions. For the most part, this size limitation was that it needed to be a hand carried cooler (no wheels or large "Yeti" type coolers) and the City of Chamblee specified that it needed to be small enough to be stowed under a chair. Several of the concerns expressed by employees were that it can be hard to stay consistent, that they would prefer there be a specific size dimension (for example like the stipulations for carry on luggage for air travel) and that it can be challenging to find staff to man each entry point.
- 2) The City of Duluth shared that they allow event goers to bring their own alcohol to a select few events that they designate as Open Zone events. This seemed to be limited to a specific concert series, Duluth Celebrates America. For all other events they allow Duluth licensed alcohol vendors to sell alcohol (they usually limit to two vendors and this is all Food Truck events, festivals, etc.). They do charge a vendor fee, however, they do not take percentages from sales.
- 3) Several cities shared an ordinance similar to ours in which the downtown restaurants within a specified area that sell alcohol may sell the alcohol (by ordinance) during an event and the patron can then walk around the entire downtown with their drink. They added that this is permitted at all times, not limited to just during events.

It is my hope that this information will be helpful as we continue the conversation regarding coolers at events in the City of Perry. As I have more conversations with these Georgia cities, I will be sure to share any further information I receive on the topic. Thank you!