



Where Georgia comes together.

www.perry-ga.gov

October 19, 2020

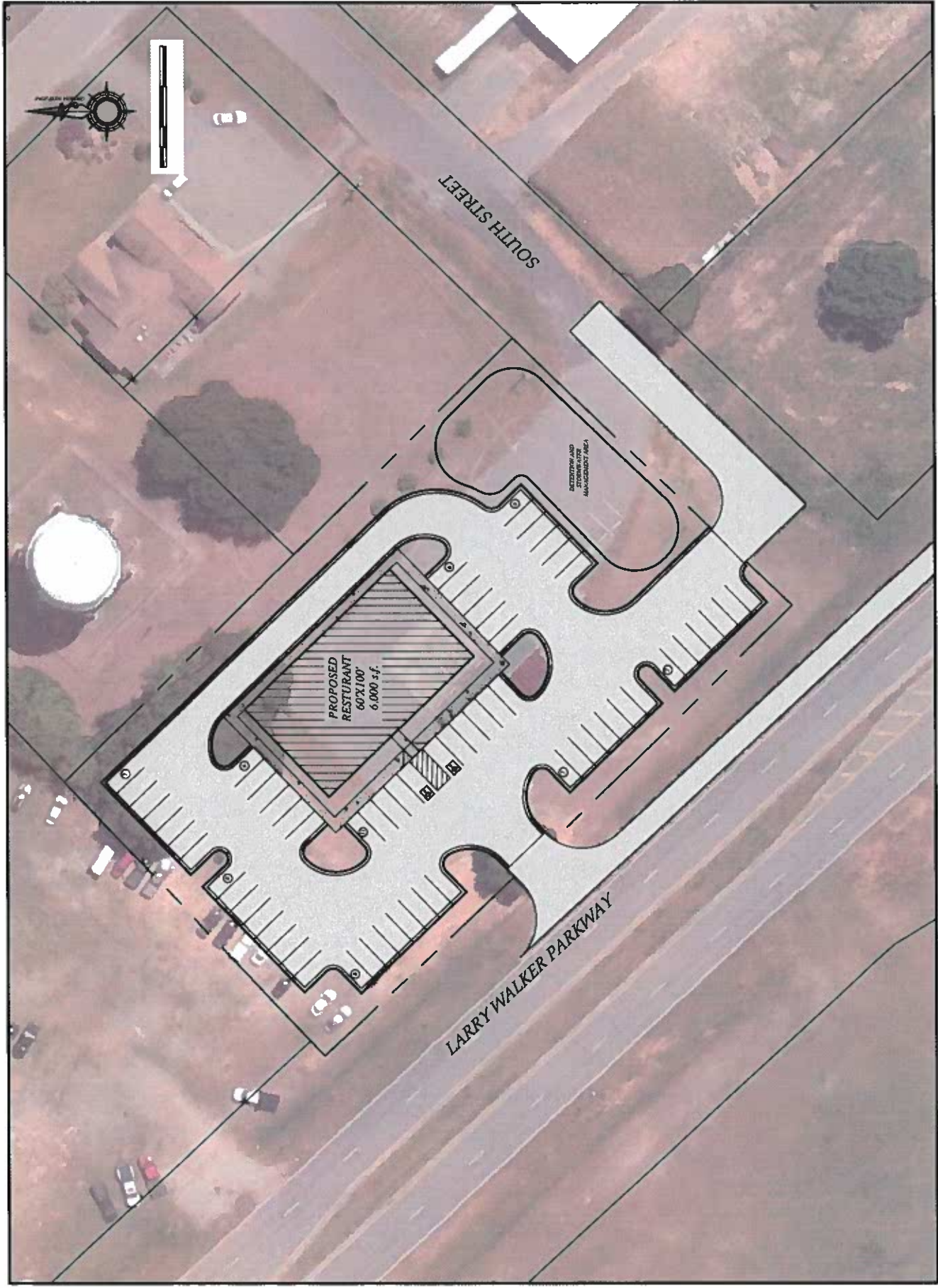
WORK SESSION AGENDA
PERRY ARTS CENTER
1121 MACON ROAD, PERRY, GA 31069

5:00 PM

To join the meeting by Facebook: Use this URL - facebook.com/cityofperryga
This will allow you to view and hear the meeting.

1. Call to Order: Mayor Randall Walker, Presiding Officer.
2. Roll:
3. Items of Review/Discussion: Mayor Randall Walker
 - 3a. Department of Community Development
 1. Consider options relative to South Street right-of-way - Mr. B. Wood.
 2. Naming of building - Mr. B. Wood.
 - 3b. Presentation(s):
 1. Presentation of City's WaterFirst program - Mr. R. Smith.
 - 3c. Department of Public Works
 1. Rozar Park Culvert Repair - Ms. A. Fitzner.
 - 3d. Department of Leisure Services
 1. Considering offering modified youth basketball program – Mr. S. Swan.
4. Council Member Items:
5. Department Head/Staff Items:
6. Adjourn.

In accordance with the Americans with Disabilities Act, accommodations are available for those who are hearing impaired and/or in need of a wheelchair. The Perry City Council Agenda and supporting material for each item is available on-line through the City's website at www.perry-ga.gov.



PROPOSED
RESTURANT
60'x100'
6,000 s.f.

RETENTION AND
MANAGEMENT AREA

SOUTH STREET

LARRY WALKER PARKWAY



Where Georgia comes together.

Annie Warren <annie.warren@perry-ga.gov>

Fwd: Naming of building

1 message

Bryan Wood <bryan.wood@perry-ga.gov>
To: Annie Warren <annie.warren@perry-ga.gov>

Thu, Oct 8, 2020 at 1:45 PM

See Mr. Gilmour's and my emails below. Thanks,



Bryan Wood

Community Development Director
City of Perry
1211 Washington Street
P.O. Box 2030
Perry, GA 31069
Office 478-988-2714
Mobile 478-235-2537
<http://www.perry-ga.gov>

Where Georgia comes together.

----- Forwarded message -----

From: **Lee Gilmour** <lee.gilmour@perry-ga.gov>
Date: Thu, Oct 8, 2020 at 1:35 PM
Subject: Re: Naming of building
To: Bryan Wood <bryan.wood@perry-ga.gov>
Cc: Robert Smith <robert.smith@perry-ga.gov>

Forward to Annie for inclusion on the next Council work session.

On Thu, Oct 8, 2020 at 1:14 PM Bryan Wood <bryan.wood@perry-ga.gov> wrote:

Lee,

With Councilwoman Peterson's input, I recommend the Community Development sign read "Planning, Engineering, & Building Services".

Bryan

Bryan Wood

Community Development Director
City of Perry
1211 Washington Street
P.O. Box 2030
Perry, GA 31069
Office 478-988-2714
Mobile 478-235-2537
<http://www.perry-ga.gov>



Where Georgia comes together.

On Wed, Oct 7, 2020 at 10:37 AM Lee Gilmour <lee.gilmour@perry-ga.gov> wrote:

Bryan

Per the Council's 10.6.20 conversation please prepare for its review a list of suggested names for your office building. It is the intention of the Council to have this name placed on the City identification sign.

--



Lee Gilmour
City Manager
City of Perry
1211 Washington Street
P.O. Box 2030
Perry, GA 31069
T 478-988-2703 F 478-988-2705
<http://www.perry-ga.gov>

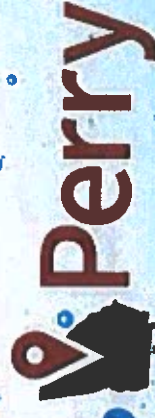
Where Georgia comes together.

Lee Gilmour
City Manager
City of Perry
1211 Washington Street

Welcome!

WaterFirst

CARING FOR OUR WATER RESOURCES



Where Georgia comes together.

SERVICE AREA &
City Limits

PERRY IS

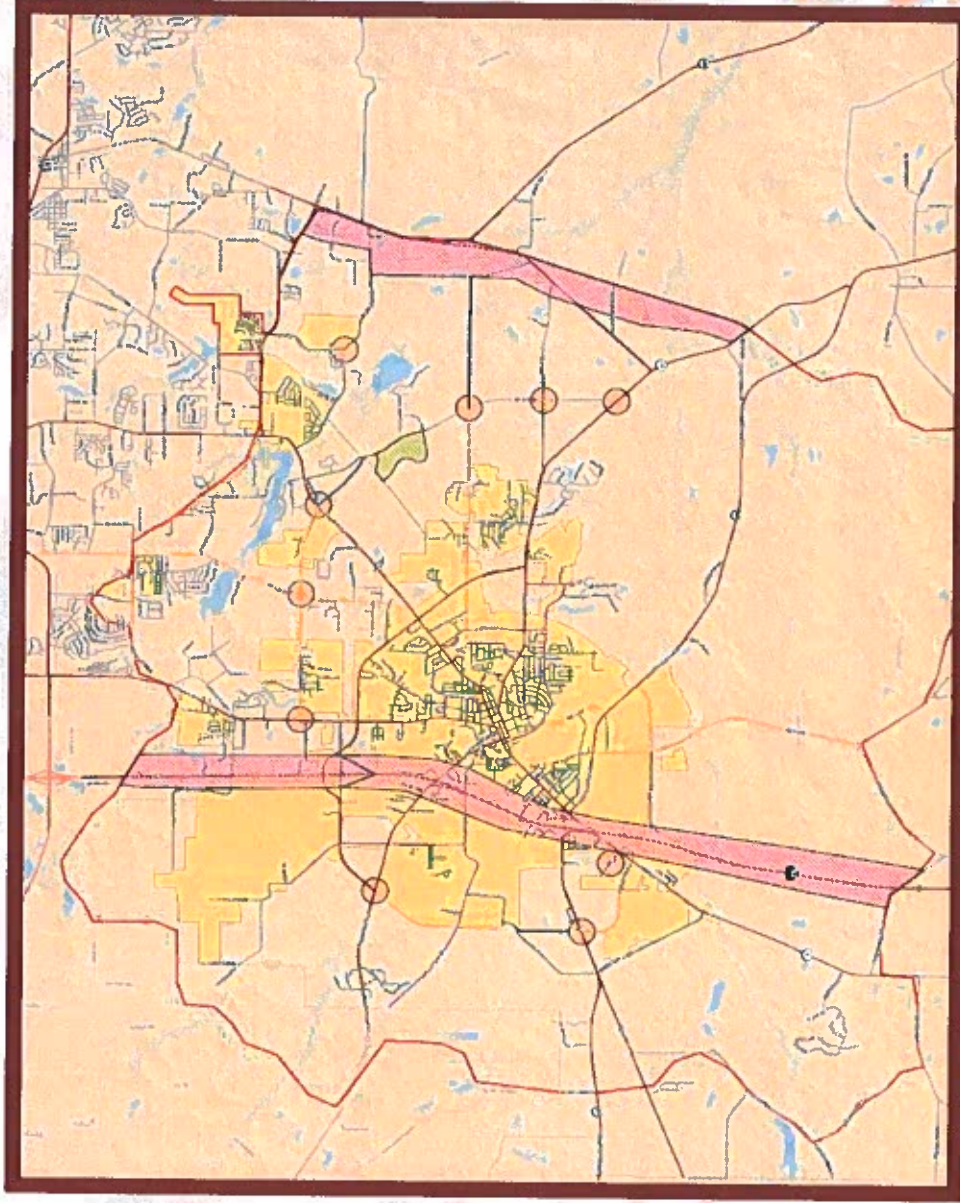
27.6

SQUARE MILES

PERRY SERVICE AREA IS

110

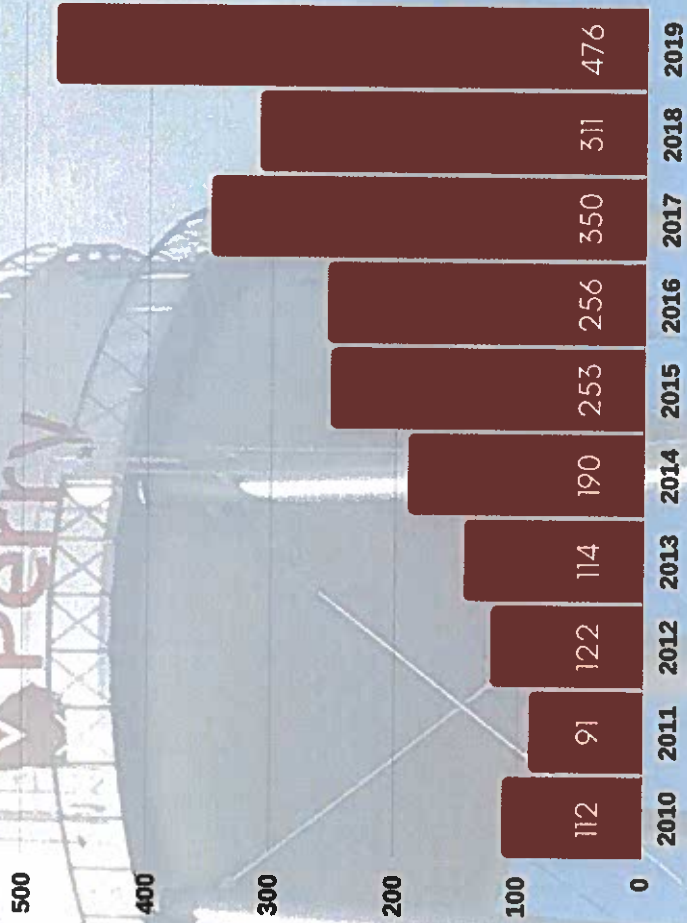
SQUARE MILES



Where Georgia comes together.

GROWTH IN *Perry*

SINGLE FAMILY RESIDENTIAL PERMITS



Fastest-Growing Cities and Towns: Georgia populations of 10,000 or more on April 1, 2010

National Rank	State Rank	Area Name	2010 Population	2019 Population	2019 Population	Numerc Difference	Percent Difference
71	1	Powell city, Georgia	18,458	25,694	7,235	39.0	
73	2	Woodstock city, Georgia	22,603	33,035	10,432	46.1	
77	3	Suwanee city, Georgia	15,343	20,577	5,234	34.1	
82	4	Grovetown city, Georgia	11,224	15,152	3,928	35.0	
91	5	Sugar Hill city, Georgia	16,464	24,517	8,053	48.9	
108	6	Decatur city, Georgia	25,630	25,656	26	0.1	
110	7	Perry city, Georgia	17,894	27,894	10,000	55.9	
118	8	Lawrenceville city, Georgia	25,526	30,526	5,000	19.6	
125	9	Fairburn city, Georgia	12,100	15,768	3,668	30.3	
134	10	Gainesville city, Georgia	24,035	43,232	19,197	79.9	

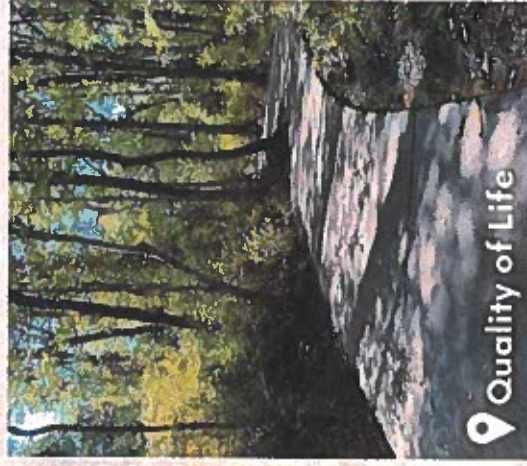
Note: This visualization includes incorporated places and minor civil divisions (MCDs) for select states.
Source: Vintage 2010 Population Estimates

1.67%

ANNUAL POPULATION GROWTH RATE

Where Georgia comes together.

OTHER SIGNIFICANT
Growth Drivers



Where Georgia comes together.

AWARD WINNING *Service*



WATER 41 TOTAL AWARDS

Gold Award for SDWA Compliance (2019)
Best Operated Plant of the Year (2019)



COLLECTION & DISTRIBUTION 20 TOTAL AWARDS

Distribution System of the Year (2018)



WASTEWATER 23 TOTAL AWARDS

WEF Burke Safety Award (2019)
Top OP (2019)
Water Reclamation Facility of the Year (2019)



STORMWATER 2 TOTAL AWARDS

Stormwater Top Op (2019)
Stormwater Top OP (2020)



Where Georgia comes together.

PROVEN *Partnership*

ESG Operations is our contracted service provider for water, wastewater, and natural gas utilities.



Water Treatment

Wastewater Treatment

Watershed Protection

Stormwater Protection

Collection & Distribution

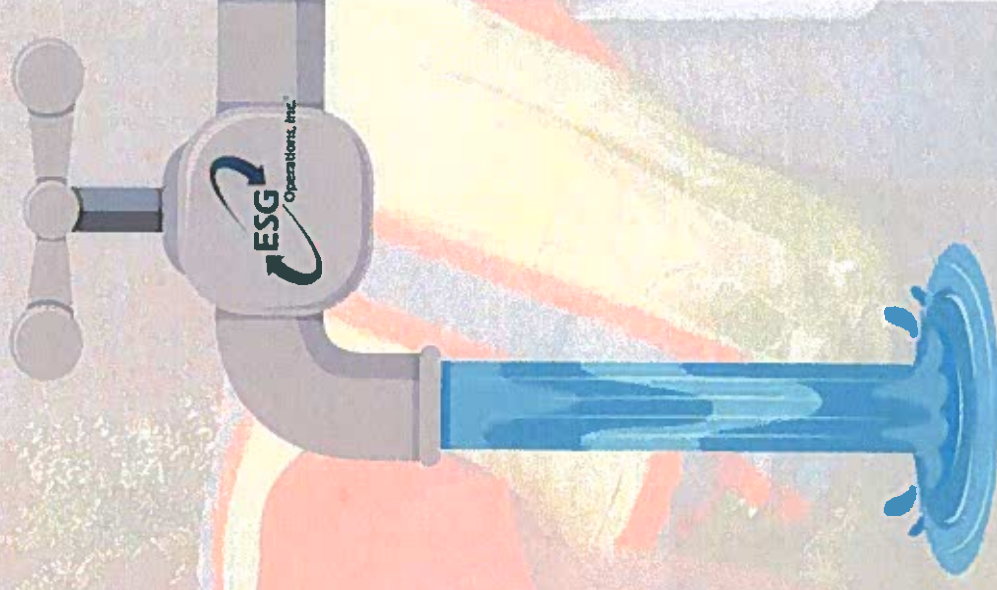


Meter Reading

Meter installation



Natural Gas



Where Georgia comes together.

WHY *Water First?*

THE CITY OF PERRY IS COMMITTED TO...

- ✓ Water Stewardship
- ✓ Growth Management
- ✓ Quality of Life
- ✓ Long-Range Planning
- ✓ State Collaboration
- ✓ Superior Service



Where Georgia comes together.

Where Georgia comes together.

WATER FIRST

in Perry



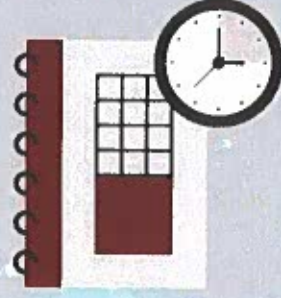
**Stormwater
Management**



**Water Supply
Management**



**Wastewater
Management**



**Water
Planning**

Where Georgia comes together.

STORMWATER *Management*



Located in the Ocmulgee River
Basin, Lower Ocmulgee Watershed



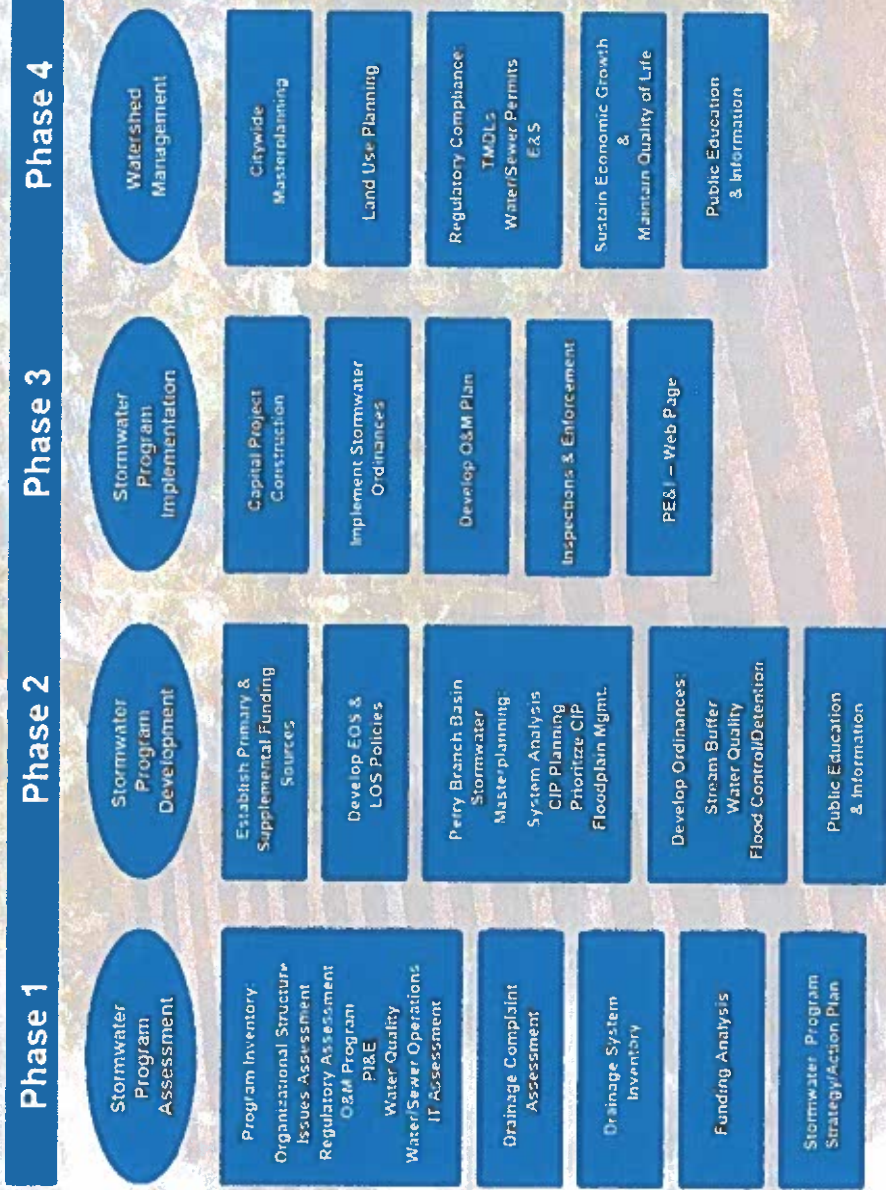
Primary discharge waters...
Big Indian Creek
Perry Branch
Mossy Creek
Flat Creek



Where Georgia comes together.

STORMWATER Management

Watershed Protection Plan Action Items



Watershed Protection Plan
Sanitary Sewer Service Area

Prepared for
City of Perry, Georgia

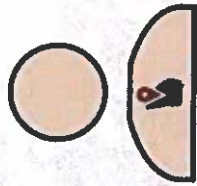
January 2006

INTEGRATED
Science &
Engineering
105 Mountain Crossing
Peachtree, Georgia 30274
404.281.4222
6776487 fax

Where Georgia comes together.

STORMWATER *Management*

THE UTILITY MS4 COMMUNITY | PHASE II



7,109

STORMWATER CUSTOMERS

\$759,200

OPERATING BUDGET FY21

FEE SCHEDULE

\$5.00

PER BILLING

ERU FEE

\$460.00

PER BILLING

BILLING MAXIMUM



Where Georgia comes together.

STORMWATER *Management*

INFRASTRUCTURE



4,355

CATCH BASINS



262

DITCH MILES



58

STORMWATER
PIPE MILES



62

PONDS



303

FY20 SERVICE
CALLS

Where Georgia comes together.

STORMWATER *Management*

MS4 COMMUNITY

- ✓ Public Education & Outreach
- ✓ Public Involvement & Participation
- ✓ Illicit Discharge Detection & Elimination
- ✓ Construction Site Stormwater Runoff Control
- ✓ Post Construction Stormwater Management
- ✓ Pollution Prevention & Good Housekeeping

36 Stormwater Best Management Practices

Where Georgia comes together.

General NPDES
Stormwater Permit
No. GA661000



ENVIRONMENTAL PROTECTION DIVISION

AUTHORIZATION TO DISCHARGE UNDER THE
NATIONAL POLLUTANT DISCHARGE ELIMINATION SYSTEM
STORM WATER DISCHARGES ASSOCIATED WITH
SMALL MUNICIPAL SEPARATE STORM SEWER SYSTEMS

In compliance with the provisions of the Georgia Water Quality Control Act (Georgia Laws 1964, p. 416, as amended), hereinafter called the "State Act," the Federal Clean Water Act, as amended (33 U.S.C. 1251 et seq.), hereinafter called the "Clean Water Act," and the Rules and Regulations promulgated pursuant to each of these Acts, all new and existing stormwater point sources associated with small municipal separate storm sewer systems, upon submittal of a Georgia Notice of Intent, are authorized to discharge stormwater to the waters of the State of Georgia in accordance with the limitations, monitoring requirements and other conditions set forth in Parts 1 through A appendix B hereof.

This permit shall become effective on December 6, 2017.

This permit and the authorizations to discharge shall expire at midnight, December 5, 2022.



R. J. B. S. A.
Director
Environmental Protection Division

STORMWATER *Management*

PUBLIC EDUCATION & OUTREACH



IMPORTANT INFORMATION

Please make sure we have your current phone number on file.

The City of Perry will be closed on September 7th in honor of Labor Day, but we are always available online and phone. Cash is only accepted at the KIOSK for utility payments. Try our new text to pay and safety store credit card information, if you visit in person, masks are requested.

If you have not filled out your 2020 Census forms, please do before time runs out

Be Nature Friendly! Never dump anything into storm drains or in streams. Storm water fee is to fund the expenses of the City's MS4 State mandated permit to avoid property tax increase.

The Annual Consumer Confidence Report for your drinking water can be found posted at City Hall and on our website at www.perry.ga.gov

Utility Bill Information

Children Education

Where Georgia comes together.

STORMWATER *Management*

PUBLIC EDUCATION & OUTREACH

Stormwater Graphic Display Program



What is Stormwater?
Stormwater is water that comes from rain. This water goes down into the ground or flows down the street. Trash and other types of pollution make the water we drink dirty and scary!

Trash is scary!

The water that does not go into the ground flows into stormwater catch basins.

The water then goes to a big grassy area located behind this school where it flows to Big Indian Creek.

Water in Big Indian Creek feeds the Ocmulgee River & Alabama River Basins. This is how our stormwater ends up in the Atlantic Ocean.

Pollution in our stormwater can really hurt the water we drink and use!

The City of Perry works hard to make sure stormwater is taken care of and our water safe to use.

You Can help!

- No Paper
- No Food Trash
- No Car Care Products

ONLY RAIN IN THE STORM DRAIN

Perry
Perry County Authority

Where Georgia comes together.

STORMWATER Management

PUBLIC EDUCATION & OUTREACH



WE ARE HERE TO ASSIST OR ANSWER ANY QUESTIONS

If you have questions regarding the City of Perry Stormwater Management Program, please give us a call:

OFFICE
478-986-3777

WASTEWATER TREATMENT PLANT
478-986-2877

PRODUCT MANAGER
Office: 478-986-2877
Cell: 478-823-8877

CITY MANAGER
478-986-2757

ASSISTANT CITY MANAGER
478-986-2742



**CITY OF PERRY
WASTEWATER TREATMENT PLANT**



1000 STATE STREET, SUITE 100
PERRY, GEORGIA 30567
PHONE: 478-986-3777 / FAX: 478-986-2878



Protecting our environment
improving the way we live

Watershed Protection
CITY OF PERRY, GEORGIA



WATERSHED PUBLIC EDUCATION

What is Watershed Protection?

A watershed is a land area that drains rain and other water into a creek, river, lake, wetland, bay or groundwater aquifer.

Rain and runoff from homes and streets, lawns, yards, parking lots, sidewalks, roofs, driveways, and parking lots, wash into storm drains and creeks. When these pollutants enter the storm drain system and flow directly to local creeks, it often is detrimental to pollutants that can be toxic to fish, wildlife, and people.

Animals and small businesses are the leading source of pollutants in our watersheds. We have the primary responsibility for the protection and maintenance of our water resources. Pollutants that get into our water can harm the health of people and animals. We can help protect our water resources by taking simple steps to reduce pollutants that get into our creeks. We need to protect the water quality in our creeks, rivers, and streams. We need to protect the water quality in our creeks, rivers, and streams. We need to protect the water quality in our creeks, rivers, and streams.

How do pollutants enter our creeks?

- Most of our pollutants which end up in our creeks come from our everyday activities
- Littering, oil, paint, and household chemicals
- Improper disposal of household chemicals
- Lawn and garden care including fertilizers, pesticides, and herbicides
- Pet waste, especially dog and cat feces
- Air pollution, especially from cars and trucks
- Stormwater runoff from roofs, streets, and parking lots
- Drains and storm drains that connect to creeks
- Improper disposal of household chemicals
- Improper disposal of household chemicals
- Improper disposal of household chemicals
- Improper disposal of household chemicals

HOW YOU CAN HELP KEEP OUR CITY BEAUTIFUL AND SAFE.

- Prevent storm water pollution in the City of Perry by making small changes to your daily routines.
- Change how you use oil, paint and solvents. Use oil absorbent mats. Change habits and disposal of used oil.
- Use responsible car wash, or wash cars in a storm drain. Empty your car's oil.
- Keep a trash bag in the car. Subject all bags and containers to a proper disposal.
- Clean houses and walk out of your dog and cat litter.
- Dispose of pet waste in the garbage.
- Adopt your stormwater management system. Implement your stormwater management system. Implement your stormwater management system.
- If you see litter, pick it up and put it in a trash can.

Where Georgia comes together.

STORMWATER *Management*

PUBLIC INVOLVEMENT & PARTICIPATION



You're invited to the City of Perry's

NEIGHBORHOOD CLEAN UP EVENT

 INVITE A FRIEND TO HELP	 COLLECTING RECYCLABLES, ETC.	 ALL SUPPLIES ARE PROVIDED
 9AM - 12:30PM	 CREEKWOOD PARK	 LUNCHES LIKE HAMBURGERS AND PARTISANOS

NOVEMBER 9, 2019
CREEKWOOD PARK
9 AM - 12:30 PM
1107 Creekside Drive, Perry, Ga
For questions, contact Perry's Sustainability Dept.
678-385-2116



~3 TONS

TRASH COLLECTED DURING
SPRING & FALL NEIGHBORHOOD
CLEANUPS

Where Georgia comes together.

STORMWATER *Management*

CURBSIDE YARD DEBRIS PICKUP
2,409 TONS
FY20

"WASTE AMNESTY" CLEAN UPS
~ 47 TONS
SPRING & FALL

PUBLIC INVOLVEMENT & PARTICIPATION

MONDAY, OCTOBER 22, 7:00 A.M. -
FRIDAY, OCTOBER 26, 4:00 P.M.

Perry Solid Waste Division will pick up all unwanted items at your curbside on your scheduled collection day such as yard debris, bulk waste items, items from fall cleaning, furniture, tires (4 per household) and paint cans.

Help keep Perry beautiful.

No phone calls are required for pickup.
For more information call 478-268-2739.

FALL CLEANUP WEEK



Where Georgia comes together.

Where Georgia comes together.

STORMWATER *Management*

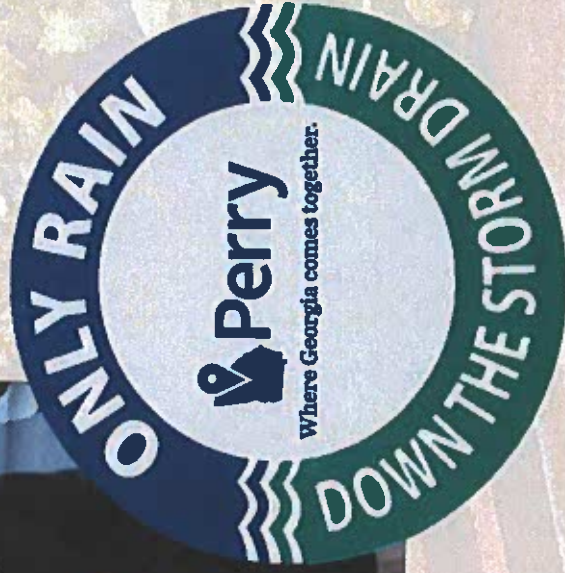
PUBLIC INVOLVEMENT & PARTICIPATION



**FREE CURBSIDE
RESIDENTIAL RECYCLING**

**4,613
CUSTOMERS PARTICIPATE**

**728 TONS
RECYCLING COLLECTED
IN 2019**



Where Georgia comes together.

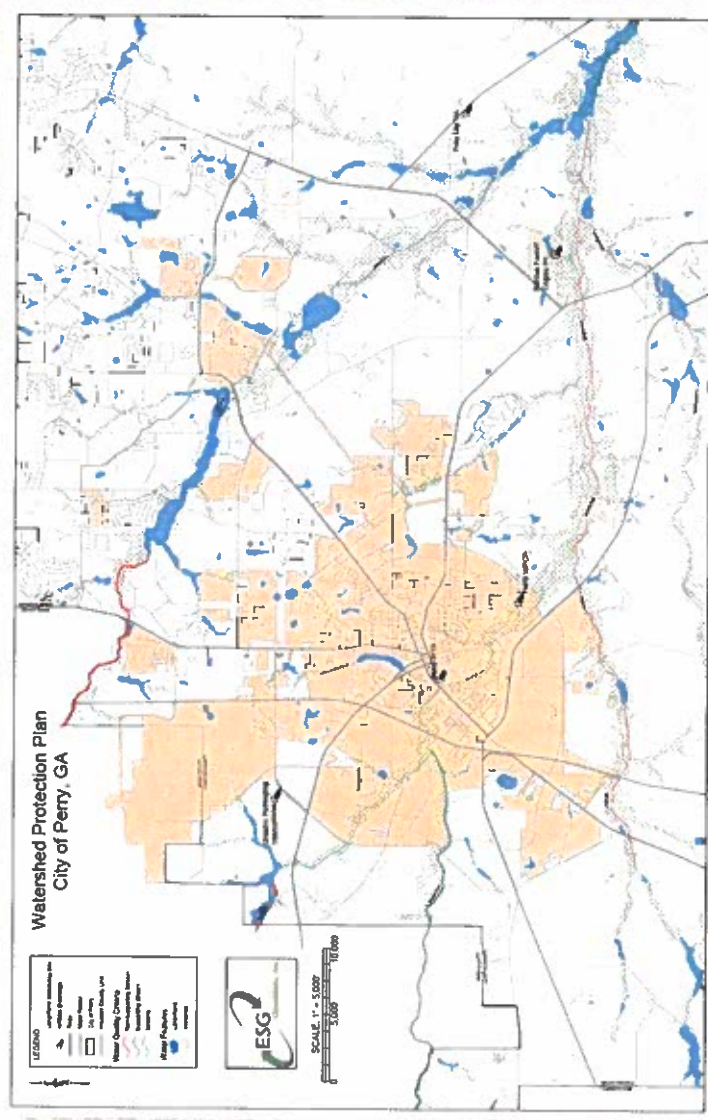
STORMWATER *Management*

ILLICIT DISCHARGE DETECTION & ELIMINATION

WATERSHED PROTECTION & WATER QUALITY MONITORING PROGRAM

QUARTERLY TESTING AT 20 MONITORING SITES

- Wet & dry weather testing
- Insitu testing performed on-site
- 35 testing parameters
 - Key Water Quality Indicators
 - Dissolved oxygen, water temperature, turbidity, lead, fecal coliform, etc.
- Stream macro-invertebrae testing



Where Georgia comes together.

STORMWATER *Management*

IMPAIRED WATERS MOINTORING & IMPLEMENTATION PROGRAM

FLAT CREEK
5 MILE SEGMENT
NON POINT-SOURCE
BIOTA F



MOSSY CREEK
8 MILE SEGMENT
NON POINT-SOURCE
BIOTA F



Where Georgia comes together.

STORMWATER Management

- Site Plan Review
- Monitoring of all sites with LDA permits
- Enforcement Actions as Necessary



Enforcement Procedures

- Verbal
- Formal Notification
- Fines
- Stop Work

CONSTRUCTION SITE STORMWATER RUNOFF CONTROL

Stormwater Inspection			
2015 - Construction Site SW Runoff Control - BMP #3			
Location	Permit #	1st Inspection	2nd Inspection
New Haven Phase 2		3/30/2015	3/13/2015
Avonston Glen Phase 2		3/16/2015	3/17/2015
Summer Branch		3/30/2015	3/12/2015
Legacy Park		2/2/2015	3/21/2015
Woodlands		3/30/2015	
Water Treatment Plant #3		3/30/2015	
		1/21/2015	
April 1 - June 30			
Location	Permit #	1st Inspection	2nd Inspection
The Farm		5/9/2015	5/28/2015
New Haven Phase 2		4/5/2015	4/19/15
Summer Branch		4/30/2015	4/19/15
Legacy Park		5/16/2015	
Interdova MAH			
July 1 - September 30			
Location	Permit #	1st Inspection	2nd Insp
The Farm		8/1/2015	9/1/2015
Lake Forest		7/29/2015	
New Haven Phase 2		7/2/2015	8/1/15
Avonston Glen Phase 2		7/2/2015	7/1/2015
Summer Branch		7/13/2015	8/5/2015
Legacy Park		7/2/2015	8/3/2015
Woodlands		7/5/2015	7/30/2015
Mossy Creek		7/16/15	8/28/2015
Invertope Mill		7/16/15	8/11/15
Water Treatment Plant #3		7/5/2015	
Woodlands			
October 1 - December 31			
Location	Permit #	1st Inspection	2nd Insp
The Farm		10/22/2015	12/14/2015
Lake Forest		10/16/2015	
New Haven Phase 2		10/16/2015	
Avonston Glen Phase 2		10/16/2015	
Summer Branch		10/16/2015	11/5/2015
Legacy Park		11/20/2015	12/13/2015
Woodlands			
Mossy Creek		12/18/2015	
Invertope Mill		10/29/2015	
Water Treatment Plant #3			
Woodlands			

BMP#4 - Enforcement Procedures January 1 - December 31					
Location	Violation	1st Notice	2nd Notice	3rd Notice	Status
Paradise Shopping Center Perry Parkway	Illegal Discharge from employer disposal of mops water. A 72 hours corrective action notice given by S. Nottingham	4/18/2015			2nd Notice Pending
Paradise Shopping Center Perry Parkway	cleaning of illicit discharge from the retention pond, work, removal of debris and trash around the structures and curbing and the administration of illicit discharge connections and discharges activities. A 72 hours corrective action notice given and mailed by S. Nottingham		5/16/2015		3rd Notice of fines
Paradise Shopping Center Perry Parkway	Notification to inform owner relative to this of \$200 a day (reoccurring) and the fee for filing of official contractor to complete the corrective actions. Certified letter mailed by S. Nottingham.			5/26/2015	and contractor (fines)
American Uberfirst 1307 Washington St	Illegal Discharge from employer disposal of oil/grease from location. Signs of sedimentation running into the storm drains and tracking of the street. Verbal notice of 72 hours corrective action to cleanup violation areas. Notice given to manager of duty free by S. Nottingham.	6/11/2015			Corrected
Woodlands Madenwood Way	Filled berms with fence-wallets into the street and lack of stabilization/erosion. Verbal notice of 72 hours corrective action to cleanup violation areas. Contractor contacted by S. Nottingham	8/29/2015			Corrected
Legacy Park	Filled to cleanup hydraulic fluid in the street from berms used on equipment. Verbal notice to 72 hours to clean fluid from the street and curb basin. Contractor contacted by S. Nottingham.	9/14/2015			Corrected

Where Georgia comes together.

STORMWATER *Management*

POST CONSTRUCTION



Inspection Program



Maintenance Program

- Working to obtain maintenance agreements when necessary.
- Initiative to own regional, residential storm water structures.

Where Georgia comes together.

STORMWATER *Management*

POLLUTION PREVENTION/ GOOD HOUSEKEEPING



- ✓ Stormwater Structure Inventory / Map
- ✓ Routine Inspections of all Infrastructure
- ✓ Maintenance Program – HiperWeb
- ✓ Street Sweeping Program – 1,107 Miles (2019)
- ✓ Litter Program – 266 Bags (2019)
- ✓ Yard Debris Cleanup – 2,049 Tons (FY20)

Where Georgia comes together.

STORMWATER *Management*

LAND MANAGEMENT ORDINANCE DEVELOPMENT & DESIGN STANDARDS

PARKING STANDARDS

- Lower minimums with low-impact development requirements
- Alternative transportation provisions
- Assembly use / overflow parking pervious surface requirements



PLANNING

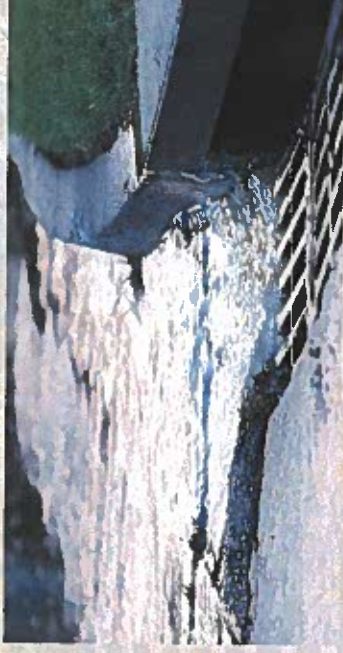
LANDSCAPING REQUIREMENTS

- Landscaping plan requirement
- Irrigation rain sensors
- Landscaped parking islands
- Street trees
- Perimeter buffering and screening
- Tree protection standards

Where Georgia comes together.

STORMWATER *Management*

PLANNING



LAND MANAGEMENT ORDINANCE STORMWATER MANAGEMENT

STORMWATER MANAGEMENT REQUIREMENTS & CONTROLS

- Water quality and quantity policies applicable to all surface waters / stormwater
- Inspections, monitoring, etc.

SOIL EROSION, SEDIMENTATION, & POLLUTION CONTROL

- Monitoring of land-disturbing activities and enforcement of applicable water quality / quantity standards

WATER RESOURCE PROTECTION

- Establishes development standards designed to protect environmentally sensitive natural resources, specifically wetlands and groundwater recharge areas
- Outlines allowable development uses/types in sensitive areas

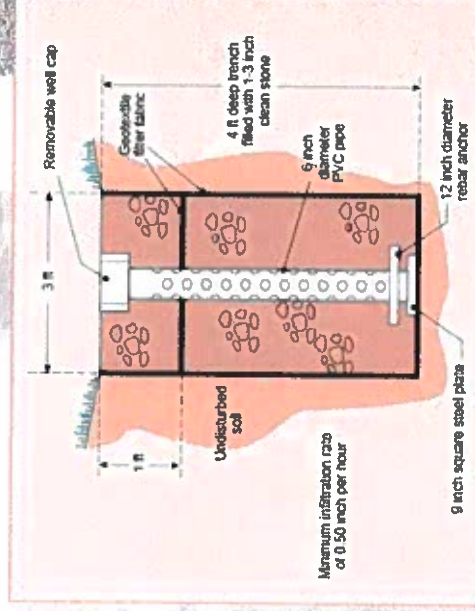
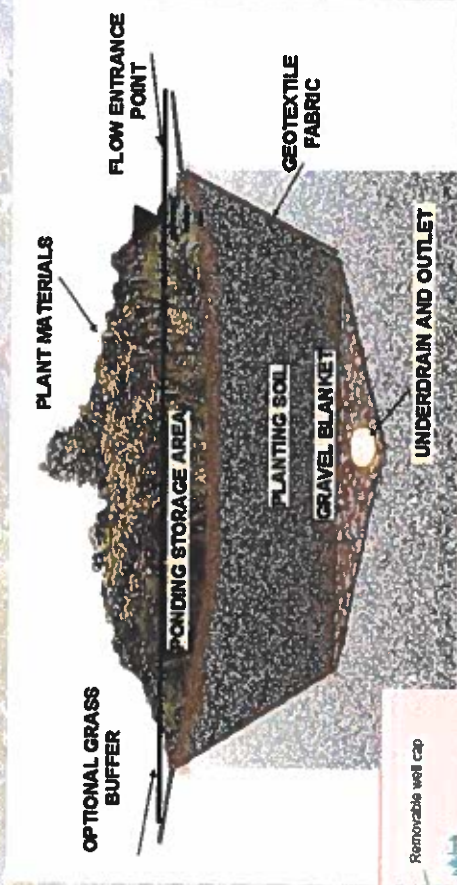
Where Georgia comes together.

STORMWATER *Management*

GREEN INFRASTRUCTURE/ LOW IMPACT DEVELOPMENT

- Bioretention Areas
- Infiltration Practices
- Permeable Bricks / Blocks
- Pervious Concrete
- Porous Asphalt
- Rainwater Harvesting

PLANNING



Where Georgia comes together.



Quote No.: GA20212

October 12, 2020

To: City of Perry – Public Works
Attn: Ansley Fitzner

Re: Rozier Park Culvert Repair

Scope of Work:

Furnish materials, equipment, labor and supervision to restore the structural integrity of approximately 88 LF of existing 107" x 77" corrugated metal storm drain piping by SpinCast application of an 8000 PSI fiber reinforced engineered pipe repair mortar at a minimum finished thickness of 1 inch.

Cost of Work: \$41,227.00 / LS

Notes:

1. We will need access to a potable water supply for materials mixing and equipment clean-up. The City to provide a hydrant meter for water.
2. Our proposal includes:
 - a. Flow control during normal conditions
 - b. Removal of debris and silt as needed from culvert
 - c. Repair of invert as needed, and fill void under pipe
 - d. Pre/Post video inspection with GoPro Camera

Sincerely,

Anita Clyne – President
Utility Asset Management, Inc.

Licensed In:

Alabama * Georgia * Florida * South Carolina * North Carolina * West Virginia

Corporate Office:

2025 US Hwy 41 S. ♦ Perry, Georgia, 31069
Office: 478-847-2301 ♦ E-Fax: 678-623-0282
www.uamonline.com



Where Georgia comes together.

OFFICE OF THE CITY MANAGER

MEMORANDUM

TO: Mayor / Council
FROM: Lee Gilmour, City Manager
DATE: October 15, 2020
REFERENCE: Youth basketball program

Attached is a copy of Mr. Swan's 10/14/20 email requesting Mayor/Council confirm the previous decision to cancel the City's youth basketball program or active it subject to certain conditions.

The Administration recommends Council affirm the cancelation decision based on the following:

1. The Governor has extended his Executive Order restricting the number of persons who can gather in one location for an event.
2. The October 14, 2020 Houston County COVID-19 Status Report shows an increase in cases, deaths and hospitalizations.
3. There may be scheduling issues with the school gyms or added costs for COVID-19 prevention tasks.
4. Parents/guardians could have difficulties watching the program streaming.
5. Selecting who could attend will be a significant issue.
6. There have been several complaints about the program's costs already. The additional add-on fee for streaming will not be favorably received.
7. If Council agrees to provide this program it may be pressured to provide other programs.

cc: Mr. R. Smith



Where Georgia comes together.

Lee Gilmour <lee.gilmour@perry-ga.gov>

Basketball Cancellation

1 message

Sedrick Swan <sedrick.swan@perry-ga.gov>
To: Lee Gilmour <lee.gilmour@perry-ga.gov>
Cc: Robert Smith <robert.smith@perry-ga.gov>

Wed, Oct 14, 2020 at 1:20 PM

Mr. Gilmour,

We have received several inquiries about Youth Basketball. It has been difficult trying to "soften the blow" of canceling Winter sports. I think that it would be better received if the decision came from Mayor and Council.

I have done some research surrounding the matter. GHSA has published the guidelines for basketball, as it relates to COVID 19.

The argument from the public is that high schools are planning to play basketball and are currently participating in a relatively successful football season. I foresee that the news of canceling winter sports will not be received well. Especially when surrounding agencies (WR and Bibb Co.) are advertising registration.

I have an alternative that I would like to submit:

The Mayor has expressed the concern about the crowds of people that will be attending the games. Many recreation departments have implemented camera systems, that allow the opportunity for live streaming games. In theory, we could install a system and place a limit on attendees. The games could be streamed live on our website or social media platforms. Grandparents and other supporters would have the opportunity to watch remotely.

These programs have the option to charge for access and advertisement. The avg. cost ranges from \$3000-\$5000. My recommendation is to divide the cost among the participants at registration. This would be an estimated \$10-15 increase in fees.

As a public servant, I support the decision of Mayor and Council. I am tasked with showing that we are truly balancing "safety and service". I wanted to make this recommendation to show that we have exhausted all options. We will continue to demonstrate our support of administration.

Let me know your thoughts.

--

Sedrick Swan, CPRP
Director of Leisure Services
City of Perry
1060 Keith Drive
Perry, GA 31069
Office: 478-988-2863
Mobile: 478-244-6507
<http://www.perry-ga.gov>