



Where Georgia comes together.

www.perry-ga.gov

November 2, 2020

WORK SESSION AGENDA

5:00 PM

PERRY ARTS CENTER
1121 MACON ROAD, PERRY, GA 31069

To join the meeting by Facebook: Use this URL - facebook.com/cityofperryga
This will allow you to view and hear the meeting.

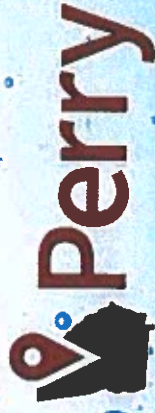
1. Call to Order: Mayor Randall Walker, Presiding Officer.
2. Roll:
3. Items of Review/Discussion: Mayor Randall Walker
 - 3a. Office of the City Manager:
 1. WaterFirst Presentation – Water & Wastewater - Mr. R. Smith.
 - 3b. Office of the City Clerk:
 1. Establish Council’s 2021 meeting calendar – Ms. A. Warren.
 - 3c. Department of Finance:
 1. Discussion / recommendation for P-card provider - Mr. M. Worthington.
4. Council Member Items:
5. Department Head/Staff Items:
6. Adjourn.

In accordance with the Americans with Disabilities Act, accommodations are available for those who are hearing impaired and/or in need of a wheelchair. The Perry City Council Agenda and supporting material for each item is available on-line through the City’s website at www.perry-ga.gov.

Welcome!

WaterFirst

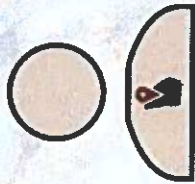
CARING FOR OUR WATER RESOURCES



Where Georgia comes together.

WATER SUPPLY *Management*

EPD PERMITTED DOMESTIC WATER SYSTEM



8,755
WATER CUSTOMERS



6.15 MILLION
GALLONS PER DAY
CURRENT PERMITTED CAPACITY

THE UTILITY

1.78 MILLION
GALLONS PER DAY
CITYWIDE AVERAGE DAILY USE

168
GALLONS PER DAY
RESIDENT AVERAGE DAILY USE

514
GALLONS PER DAY
COMMERCIAL AVERAGE DAILY USE

5,674
GALLONS PER DAY
INDUSTRIAL DAILY WATER USE

Where Georgia comes together.

WATER SUPPLY

Management

THE UTILITY

FEE SCHEDULE

RESIDENTIAL

\$3.00

PER MONTH

BASE CHARGE

\$0.3825

PER UNIT/BILLING

CONSUMPTION

RESIDENTIAL/IRRIGATION

COMMERCIAL/INDUSTRIAL

\$3.00

PER MONTH

BASE CHARGE

\$0.2502

PER UNIT/BILLING

**USERS REQUIRED TO
INSTALL PRE-TREATMENT
INFRASTRUCTURE**

COMMERCIAL/INDUSTRIAL

\$0.3912

PER UNIT/BILLING

CONSUMPTION

COMMERCIAL/INDUSTRIAL

~\$8.4 MILLION

WATER/SEWER FUND

\$2.25 MILLION

ANNUAL M&O

Where Georgia comes together.

WATER SUPPLY *Management*



6
GROUNDWATER
PRODUCTION WELLS
CRETACEOUS SAND AQUIFER



5
ELEVATED STORAGE TANKS
(1.75 MILLION GALLONS)



3
GROUNDWATER
FACILITIES



165+
MILES OF PIPE

INFRASTRUCTURE

EMERGENCY SUPPLY CONNECTIONS TO HOUSTON COUNTY WATER SYSTEM

Where Georgia comes together.

WATER SUPPLY *Management*

Leak Detection & Elimination

- SENSUS; AMR System
- SCADA System

Accurate System Mapping (GIS)

Meter Maintenance & Testing

- Ongoing Meter Replacement Program (\$5.4 million)

Upgrading Older Equipment

Water Storage Practices

Enforcement of Plumbing Codes / Standards

Drought Response Program

Rate-Driven Conservation - ~2% Annual Increase

SUPPLY PROTECTION & CONSERVATION



City of Perry, Georgia

Water Conservation Plan



Revised August 17, 2012

Where Georgia comes together.

WATER SUPPLY
Management

ANNUAL WATER AUDIT

731 MILLION GALLONS

WATER SUPPLIED

600 MILLION GALLONS

CONSUMPTION

131 MILLION GALLONS

WATER LOSSES

**SUPPLY PROTECTION &
CONSERVATION**



VALIDITY WATER SCORE = 63/100

2019 - LOWEST ILI

Where Georgia comes together.

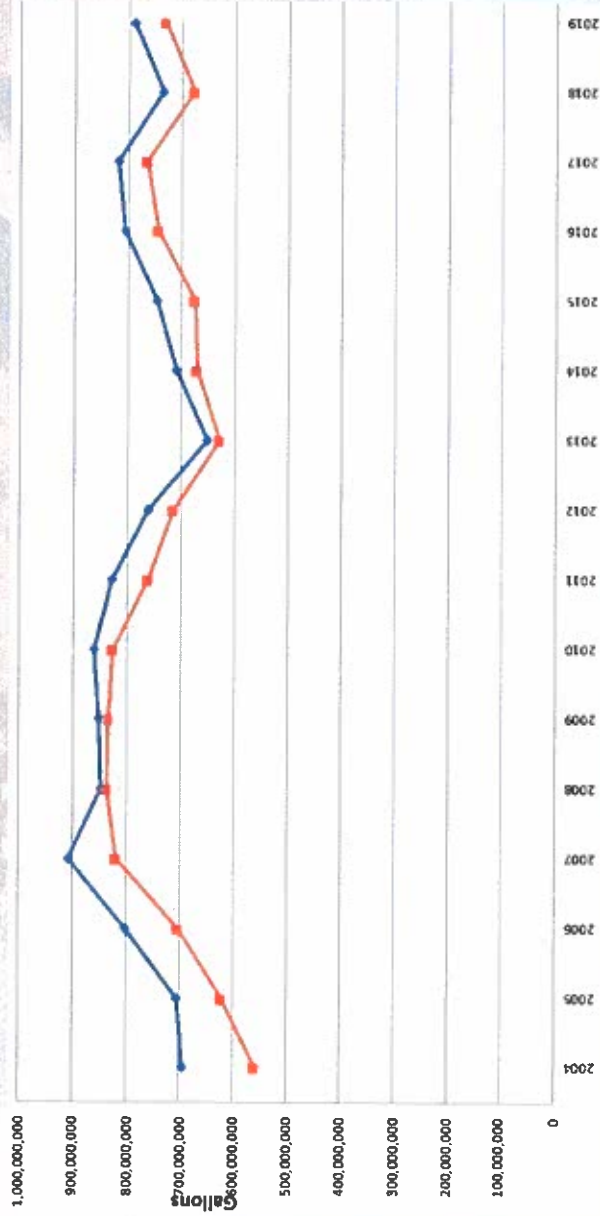
WATER SUPPLY *Management*

ANNUAL WATER PRODUCTION MAP LEGEND

RAW

TREATED

SUPPLY PROTECTION & CONSERVATION



Where Georgia comes together.

WATER SUPPLY *Management*

SUPPLY PROTECTION & CONSERVATION



Decreasing Consumption Trends

- Since 2006, a 63% increase in population with only a 25% increase in water consumption.
- A 57% decrease in gpd consumption per ERU.

Where Georgia comes together.

WATER SUPPLY Management



The City of Perry Supports
Voluntary Water Restrictions in Our Community

Every Drop Counts

Conserving water and one-others to do the same.

As a community, we are committed to providing our citizens with safe, clean water. We are also committed to conserving water and protecting our water resources. We encourage you to take the following steps to help conserve water in your home:

- Turn off the tap when brushing your teeth.
- Take shorter showers.
- Fix leaks promptly.
- Use water-saving devices.
- Only use the dishwasher and washing machine when full.
- Water your lawn in the early morning or late afternoon.
- Use mulch around plants.
- Sweep instead of hosing.
- Turn off the water when you are not using it.
- Use a bucket to wash your car.
- Use a broom to clean your driveway.
- Use a broom to clean your sidewalk.
- Use a broom to clean your porch.
- Use a broom to clean your steps.
- Use a broom to clean your stairs.
- Use a broom to clean your roof.
- Use a broom to clean your gutters.
- Use a broom to clean your downspouts.
- Use a broom to clean your foundation.
- Use a broom to clean your driveway.
- Use a broom to clean your sidewalk.
- Use a broom to clean your porch.
- Use a broom to clean your steps.
- Use a broom to clean your stairs.
- Use a broom to clean your roof.
- Use a broom to clean your gutters.
- Use a broom to clean your downspouts.
- Use a broom to clean your foundation.

When you conserve water, you help us protect our water resources and ensure a secure water supply for the future.

PUBLIC OUTREACH & EDUCATION

2015 WATER QUALITY
WITH FEDERAL GENERAL PERMIT

YOUR WATER MEETS ALL STATE AND FEDERAL REGULATIONS

WATER QUALITY MONITORING

Water quality monitoring is an important part of ensuring that the water we drink is safe and healthy. The City of Perry monitors the water quality in the Perry Water Treatment Plant and throughout the city's distribution system. We use a variety of methods to monitor water quality, including sampling and testing at various locations throughout the city. We also use advanced monitoring equipment to detect any changes in water quality as they happen. This allows us to take immediate action to address any problems and ensure that the water we provide is always safe and healthy.

WE'RE HERE 24 HOURS A DAY MAKING SURE YOUR WATER IS SAFE TO DRINK

CONTAMINANTS

There are many different types of contaminants that can be found in water. Some are naturally occurring, while others are introduced from human activities. The City of Perry monitors for a wide range of contaminants to ensure that the water we provide is safe and healthy. We use a variety of methods to monitor for contaminants, including sampling and testing at various locations throughout the city. We also use advanced monitoring equipment to detect any changes in water quality as they happen. This allows us to take immediate action to address any problems and ensure that the water we provide is always safe and healthy.

YOUR WATER IS SAFE TO DRINK

SPECIAL POPULATION ADVISORY

Some people may be more vulnerable to contaminants in drinking water than the general population. These people include:

- Infants and young children
- Pregnant women
- The elderly
- People with compromised immune systems
- People with kidney disease
- People with hemodialysis
- People with certain chronic diseases

 These people should take special precautions when drinking water. They should also consult with their health care provider about drinking water. For more information, please contact the City of Perry at 770-932-1111.

WHERE YOUR DRINKING WATER COMES FROM

The water that you drink at home or at work comes from a variety of sources. Some water comes from surface water, such as rivers and lakes, while other water comes from underground aquifers. The City of Perry uses a variety of methods to treat water from these sources to ensure that it is safe and healthy to drink. We use advanced treatment technologies to remove any contaminants that may be present in the water. This ensures that the water we provide is always safe and healthy.

CONTAMINANTS IN WATER

There are many different types of contaminants that can be found in water. Some are naturally occurring, while others are introduced from human activities. The City of Perry monitors for a wide range of contaminants to ensure that the water we provide is safe and healthy. We use a variety of methods to monitor for contaminants, including sampling and testing at various locations throughout the city. We also use advanced monitoring equipment to detect any changes in water quality as they happen. This allows us to take immediate action to address any problems and ensure that the water we provide is always safe and healthy.

WHERE YOUR DRINKING WATER COMES FROM

The water that you drink at home or at work comes from a variety of sources. Some water comes from surface water, such as rivers and lakes, while other water comes from underground aquifers. The City of Perry uses a variety of methods to treat water from these sources to ensure that it is safe and healthy to drink. We use advanced treatment technologies to remove any contaminants that may be present in the water. This ensures that the water we provide is always safe and healthy.

Where Georgia comes together.

WATER PLANT 3

TUCKER ROAD WATER TREATMENT FACILITY

- ✓ 2 million gallons per day capacity
- ✓ 2 production wells
- ✓ Replacing Water Treatment Plan 1 and associated wells
- ✓ Multi-generational water security

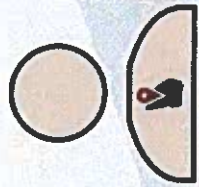
\$11,250,000
FINANCED BY GEFA



Where Georgia comes together.

WASTEWATER
Management

THE SYSTEM



7,228
SEWER CUSTOMERS



44
SEPTIC TANKS

~\$8.4 MILLION

WATER/SEWER FUND

\$2.16 MILLION

ANNUAL M&O

Where Georgia comes together.

WASTEWATER

Management

THE SYSTEM

FEE SCHEDULE

\$0.8362

PER UNIT/BILLING

1 - 80 UNITS

CONSUMPTION -
RESIDENTIAL

\$0.8362

PER UNIT/BILLING

1 - 80 UNITS

CONSUMPTION -
NON-RESIDENTIAL

\$0.6809

PER UNIT/BILLING

81 + UNITS

CONSUMPTION -
RESIDENTIAL

\$0.6809

PER UNIT/BILLING

181 + UNITS

CONSUMPTION -
NON-RESIDENTIAL

\$0.5348

PER UNIT/BILLING

USERS REQUIRED TO

INSTALL PRE-TREATMENT
INFRASTRUCTURE

1- 180 UNITS

COMMERCIAL/INDUSTRIAL

\$0.4354

PER UNIT/BILLING

USERS REQUIRED TO

INSTALL PRE-TREATMENT
INFRASTRUCTURE

181 + UNITS

COMMERCIAL/INDUSTRIAL

Where Georgia comes together.

WASTEWATER *Management*

INFRASTRUCTURE

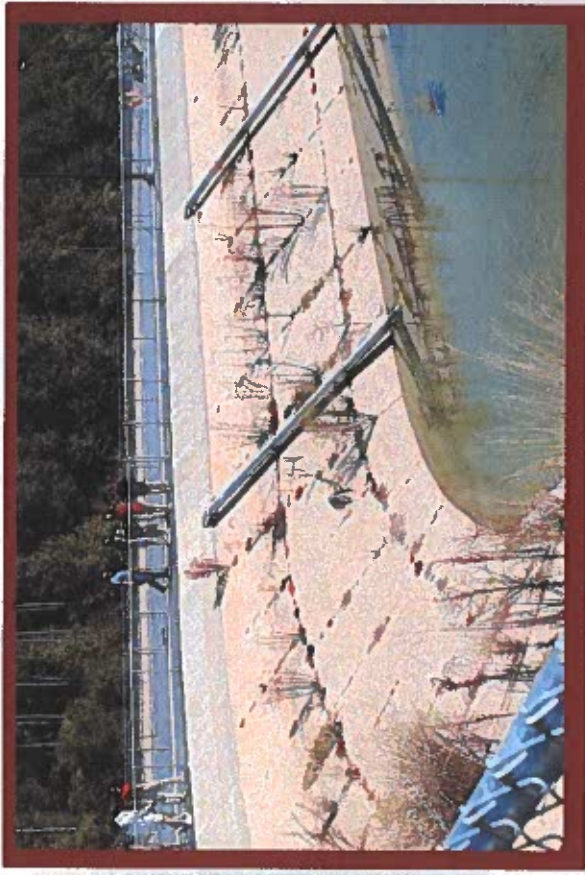
FRANK SATTERFIELD WASTEWATER TREATMENT FACILITY

TREATS AN AVERAGE
2.1 MILLION
GALLONS PER DAY

PERMITTED TO TREAT
3 MILLION
GALLONS PER DAY

MAXIMUM CAPACITY
7.5 MILLION
GALLONS PER DAY


DISCHARGES INTO
BIG INDIAN
CREEK



Where Georgia comes together.

WASTEWATER Management

PUBLIC OUTREACH & EDUCATION

 City of Perry Government is with ESG Operations, Inc. September 4 at 3:24 PM

Our friends at ESG Operations, Inc. with a friendly reminder about bacon grease!

Over time, continued dumping of Fats, Oils and Grease down the drain can cause costly plumbing repairs at your home, business – and can eventually create major sewer blockages for your city's system.

Keep drains and sewers clean of F.O.G. by:

- Using dry wipes or paper towels to soak up grease and oils from pans and dishes prior to washing.
- Saving your empty cooking oil containers to store old cooking oil.
- Keeping an empty container such as an old coffee can or mason jar to collect and dispose of fats and grease from meals.
- If possible, Recycle your oil with a local service!

All ready poured a fatty substance down your drain? Run hot water down the drain for several minutes. This helps to liquefy and loosen the fats from the pipes to allow for easier movement down the drain, and hopefully avoid a nasty clog.

#WasteOilGoesTogether



A kindly reminder from ESG Operations, Inc. - A Grease Management Expert Since 1978

OPPORTUNITIES

Connecting with Schools

The City of Waverly, Rivers and ESG Operations and Perry, Georgia are partnering with the schools in Houston County to provide educators with additional resources about the environment, water and wastewater treatment, and water conservation.

Topics

- Water treatment facilities
- Wastewater treatment facilities
- Laboratory
- Nature trail exhibit

Classroom presentations

- Hands-on activities
- Video presentations
- Analysis of drinking water
- Water conservation
- Bottled water versus tap water
- Chemicals added to water
- Watershed protection
- The water cycle

Other assistance

- Microscopic examination of organisms
- Environmental research assistance
- Science fair project analysis
- Career day providing information about the career opportunities in the environmental field

EVENTS

Let Us Celebrate the Environment with You

Clean water is something to celebrate every day but here are a list of a few holidays to schedule an environmental education presentation at your school:

World Rivers Day
September 29, 2019

World Wetlands Day
February 2, 2019

World Water Day
March 22, 2019

Earth Day
April 22, 2019

Drinking Water Week
May 5-11, 2019

For more information contact:
Trevi Faldstone at:
The City of Perry and ESG Operations
108 Park Street, 4th Floor
Perry, Georgia 31069
907-365-2777

ESG.ORG.NET

EDUCATIONAL RESOURCES FOR HOUSTON COUNTY SCHOOLS

Partnering for Environmental Education



Where Georgia comes together.

WASTEWATER *Management*

PLANNING



REVISED SEPTIC TANK PERMITTING GUIDELINES

1. Each lot must be developed as a single-family detached dwelling.
2. Each lot must be no less than minimum square footage as prescribed by Board of Health for lots served by permitted community water system.
3. Each lot must be served by Perry water meter.
4. Plats must include approved sewerage system access (i.e. easements, tank locations, etc.)
5. A covenant must run with the title advising the owner(s) it must connect with City's sewerage system when it becomes available.

Where Georgia comes together.

WASTEWATER *Management*

PERRY BRANCH SEWER SURCHARGING & RESOLUTION



15 SPILLS
IN THE PAST TWO YEARS
~3.5 MILLION GALLONS

\$2,030,415
RECENTLY ALLOCATED
FOR LINE UPGRADES

PLANNING

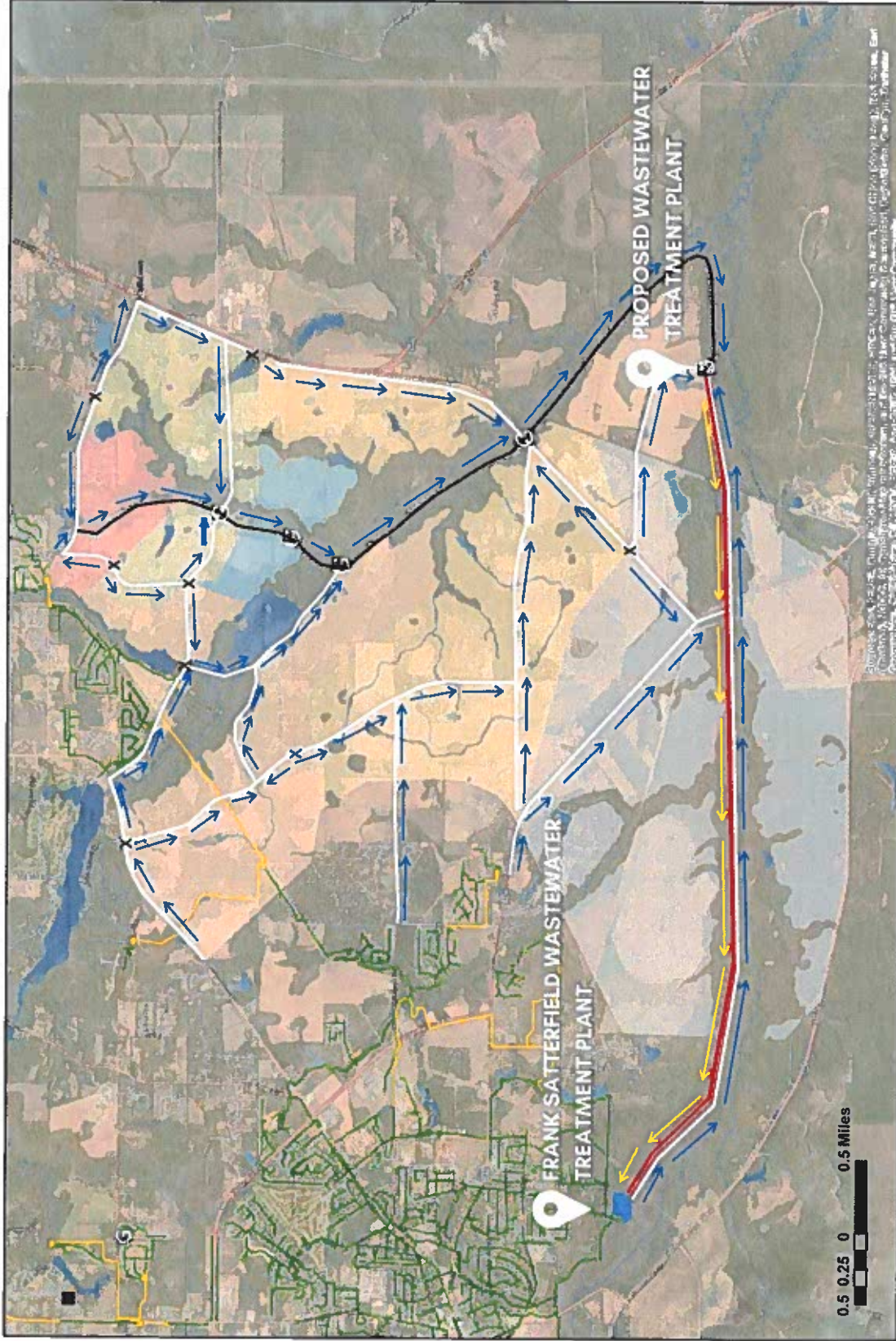


Where Georgia comes together.

POTENTIAL GRAVITY SEWER LINES

MAP LEGEND

- Potential Gravity Flow
- Gravity Flow Breaklines
- Force Main Flow
- ES1 Sub-Basin
- ES2 Sub-Basin ES3
- Sub-Basin ES4
- Sub-Basin ES5
- Sub-Basin ES6
- Sub-Basin
- Proposed Trunk Line
- Proposed Manholes
- Proposed Force Main
- Proposed Pump Station
- Potential Gravity Lines Proposed
- Connection Points
- Existing Pump Station
- Existing Force Main
- Existing Gravity Sewer
- Satterfield WPCP



Thank You!

WaterFirst

CARING FOR OUR WATER RESOURCES



Where Georgia comes together.

2021 COUNCIL MEETINGS DATES
(Subject to Change at Council's discretion)

Work Session

January 4
January 18 (Holiday)
February 1
February 15 (Holiday)
March 1
March 15
April 5
April 19
May 3
May 17
May 31 (Holiday)
June 14
July 5 (Holiday)
July 19
August 2
August 16
September 6 (Holiday)
September 20
October 4
October 18
November 1
November 15
December 6
December 20

Pre Council

January 5
January 19
February 2
February 16
March 2
March 16
April 6
April 20
May 4
May 18
June 1
June 15
July 6
July 20
August 3
August 17
September 7
September 21
October 5
October 19
November 2
November 16
December 7
December 21

Council

January 5
January 19
February 2
February 16
March 2
March 16
April 6
April 20
May 4
May 18
June 1
June 15
July 6
July 20
August 3
August 17
September 7
September 21
October 5
October 19
November 2
November 16
December 7
December 21

P-Card Vendor
Proposal

November 2, 2020
Mayor & City
Council Work
Session



Where Georgia comes together.

The purpose of the Procurement Card (P-Card) Program is to establish a faster, more cost-effective method for authorized employees to make purchases of supplies, materials, equipment, and services for City business use. The program streamlines payments by reducing the administrative burdens and costs associated with traditional methods of payment.

Current Provider

- Century Bank & Trust
 - Milledgeville
- Rudimentary Online Management/Controls
- No Rewards/Rebates



Where Georgia comes together.



Where Georgia comes together.

Opportunities with new Vendor

- Robust Realtime Controls
 - Online (multiple admin users)
 - Merchant Codes
- Annual Rebate Based on Spend (1%)
 - ~\$18,500 based on FY20 spending
- Supporting Business with Local Ties

Recommended Vendor

SYNOVUS[®]



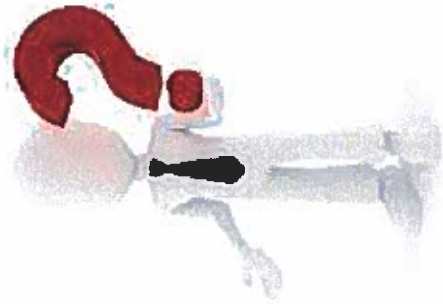
Where Georgia comes together.



Next Steps

If Mayor & Council Concur:

- Resolution Passed at Future Meeting
 - Names authorized administrator(s)
 - Authorizes City to apply for credit
- Establish accounts & distribute cards
 - Completed by January 2021
- Close current line of credit



Where Georgia comes together.

Questions
