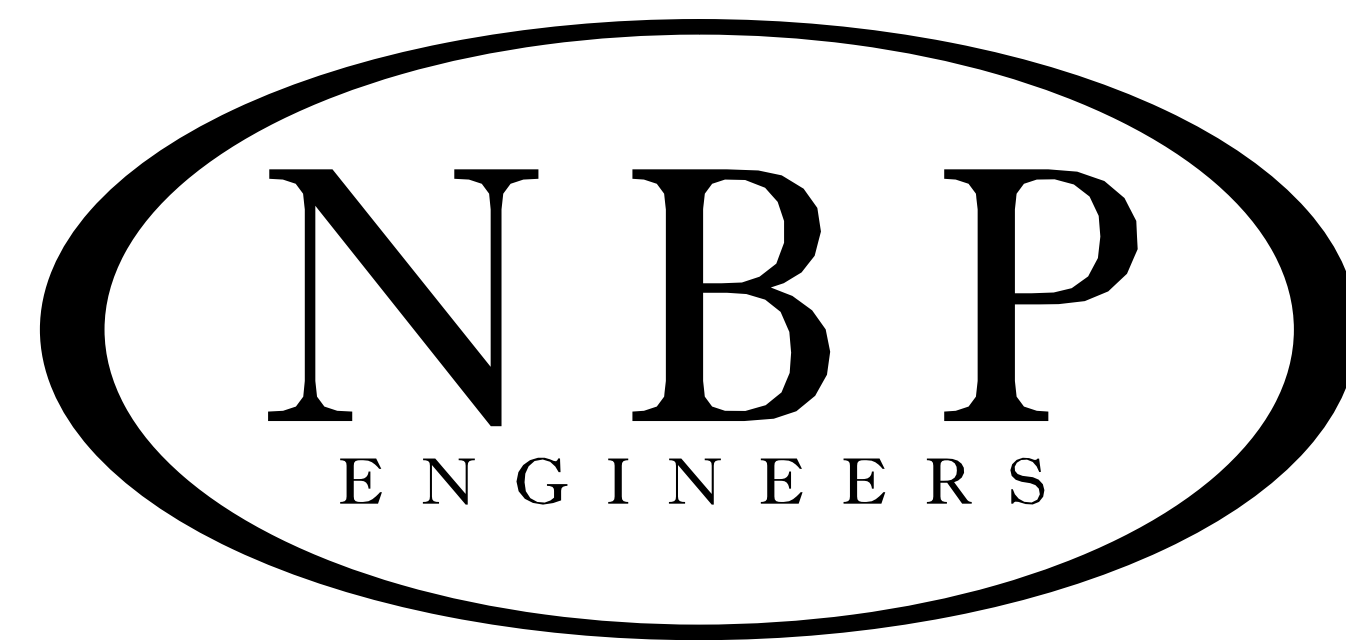


NBP Project No.: 23031

Perry Worrall Community Center

Packaged AC Replacement

City of Perry – Perry, Georgia



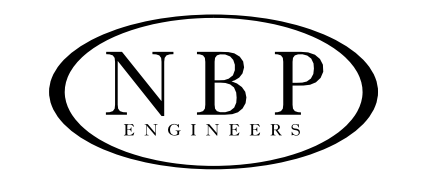
NBP ENGINEERS, INC. CONSULTANTS

316 CORPORATE PARKWAY MACON, GEORGIA
478-745-1691 www.nbpengineers.com

PROJECT CONSULTANTS

INDEX OF
DRAWINGS

<u>SHEET NO.</u>	<u>TITLE</u>
M001	ABBREVIATIONS, LEGENDS, SCHEDULES, & DETAILS - HVAC
M101	LARGE SCALE - PARTIAL FLOOR PLAN - DEMOLITION - HVAC
M201	LARGE SCALE - PARTIAL FLOOR PLAN - NEW WORK - HVAC
E001	LEGEND & SCHEDULES - ELECTRICAL
E101	PARTIAL FLOOR PLAN - DEMOLITION - ELECTRICAL
E201	PARTIAL FLOOR PLAN - NEW WORK - ELECTRICAL



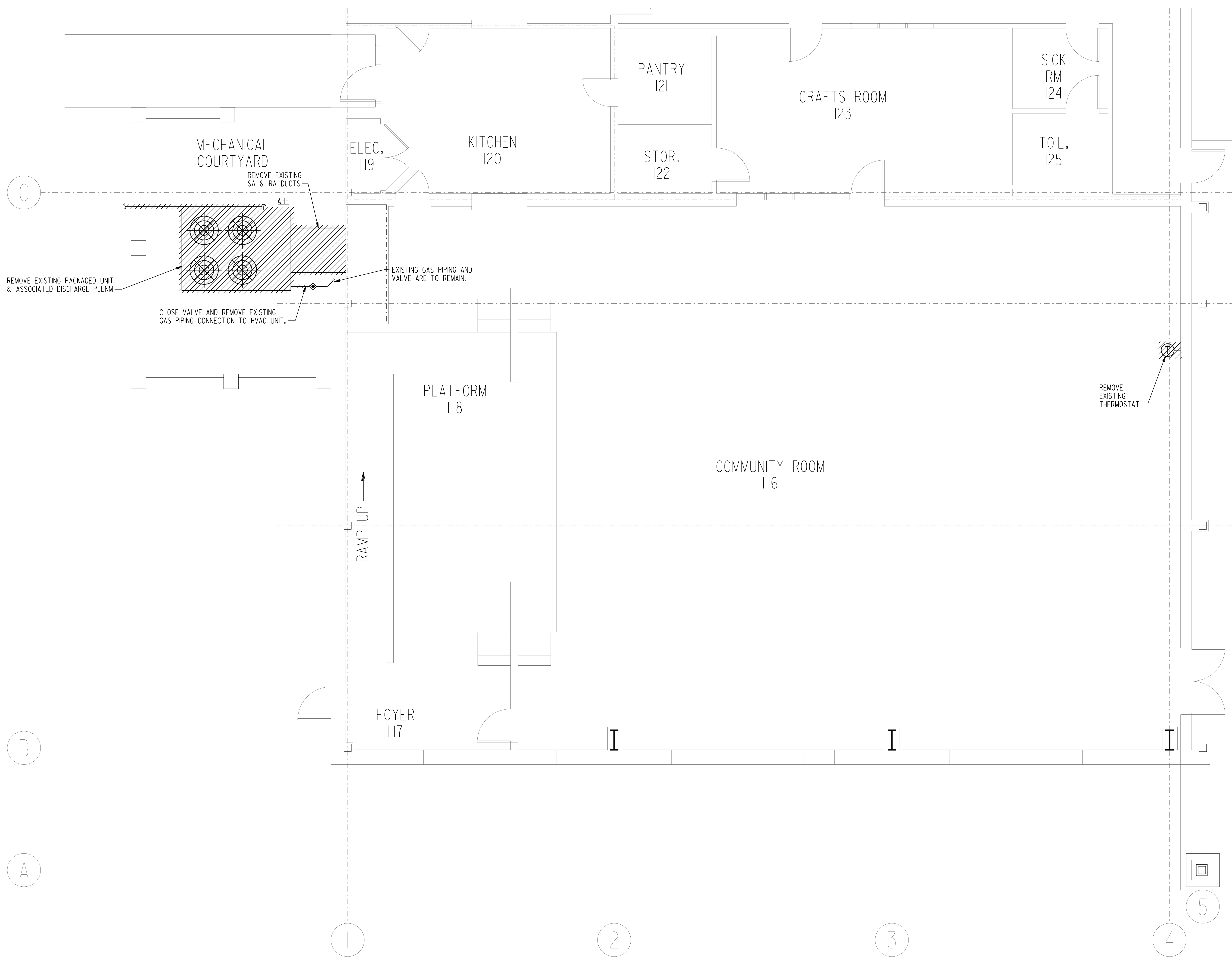
NBP Engineers, Inc.
CONSULTANTS
316 CORPORATE PARKWAY
MACON, GEORGIA 31210
478-745-1691 www.nbpengineers.com

THIS DRAWING IS THE PROPERTY OF THE ENGINEER AND MAY NOT BE REPRODUCED OR USED IN WHOLE OR IN PART WITHOUT HIS WRITTEN PERMISSION. IT IS TO BE USED FOR THE PROJECT SPECIFICALLY IDENTIFIED HEREIN AND TO BE RETURNED UPON REQUEST.

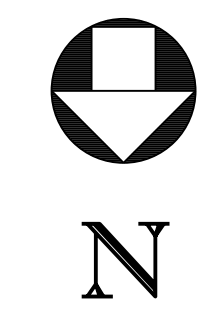
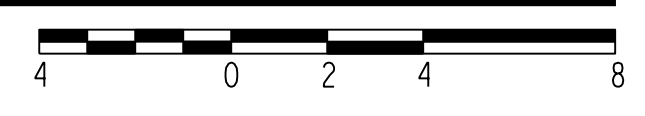


NBP Engineers, Inc. COAPEP000774
COA Exp. 06/30/2026

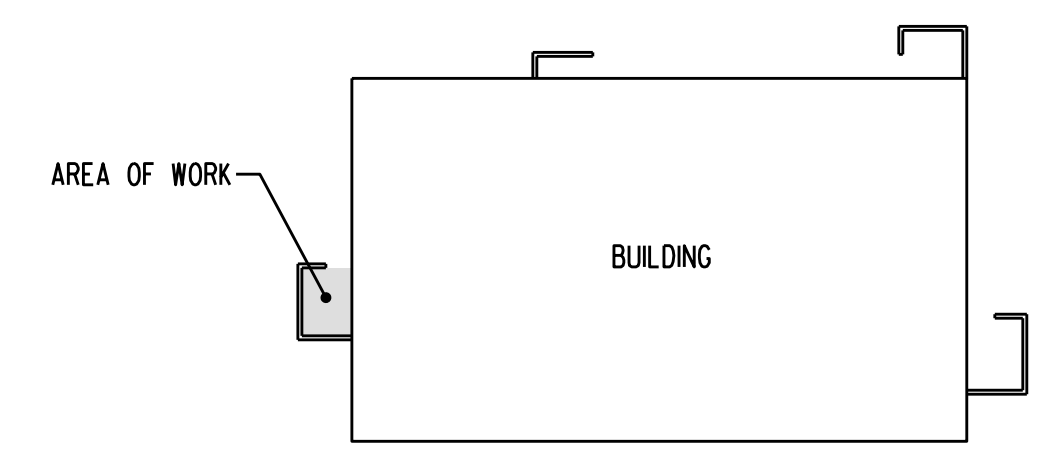
No.	REVISIONS/SUBMISSIONS	DATE



I LARGE SCALE - PARTIAL FLOOR PLAN - DEMOLITION - HVAC
SCALE: 1/4" = 1'-0"



LINE LEGEND	
-----	EXISTING TO REMAIN
///////	DEMOLITION



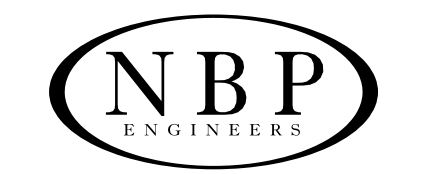
KEY-PLAN
NOT TO SCALE

NBP Project No.: 23021
Perry Worrall Community Center
Packaged AC Replacement
City of Perry - Perry, Georgia

PROJECT TITLE:
SHEET TITLE:
LARGE SCALE - PARTIAL FLOOR PLAN - DEMOLITION - HVAC

DESIGNED: WSH
DRAWN: LTF
CHECKED: WSH
DATE: 06.26.24
PROJECT NUMBER: 23031
SCALE: AS SHOWN
FILE PATH: P:\2303\23031m101.dgn
SHEET NUMBER:

M101



NBP Engineers, Inc.
 CONSULTANTS
 316 CORPORATE PARKWAY
 MACON, GEORGIA 31210
 478-745-1691 www.nbpengineers.com

THIS DRAWING IS THE PROPERTY OF THE ENGINEER AND MAY NOT BE REPRODUCED OR USED IN WHOLE OR IN PART WITHOUT HIS WRITTEN PERMISSION. IT IS TO BE USED FOR THE PROJECT SPECIFICALLY IDENTIFIED HEREIN AND TO BE RETURNED UPON REQUEST.



NBP Engineers, Inc. COAPP#000774
 COA# Exp: 03/30/2026

No.	REVISIONS/SUBMISSIONS	DATE

NBP Project No.: 23021
Perry Worrall Community Center
 Packaged AC Replacement
 City of Perry - Perry, Georgia

PROJECT TITLE:
 SHEET TITLE:
LARGE SCALE - PARTIAL FLOOR PLAN - NEW WORK - HVAC

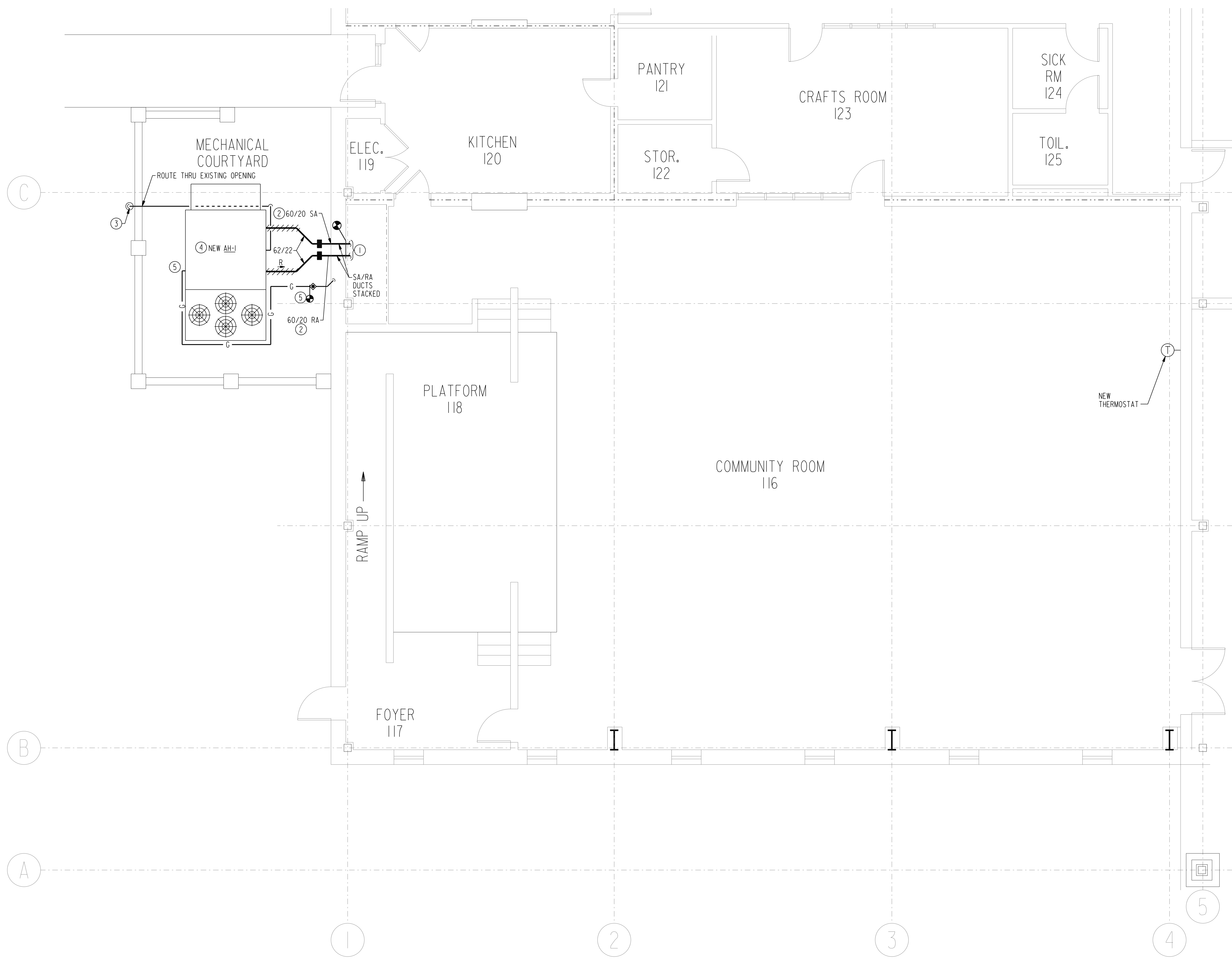
DESIGNED: WSH
 DRAWN: LTF
 CHECKED: WSH
 DATE: 06.26.24
 PROJECT NUMBER: 23031
 SCALE: AS SHOWN
 FILE PATH: P:\2303\2303m201.dgn
 SHEET NUMBER:

M201

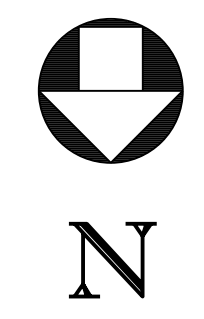
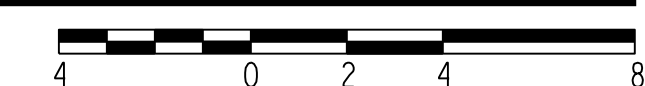
BID SET

NOTES: (THIS SHEET ONLY)

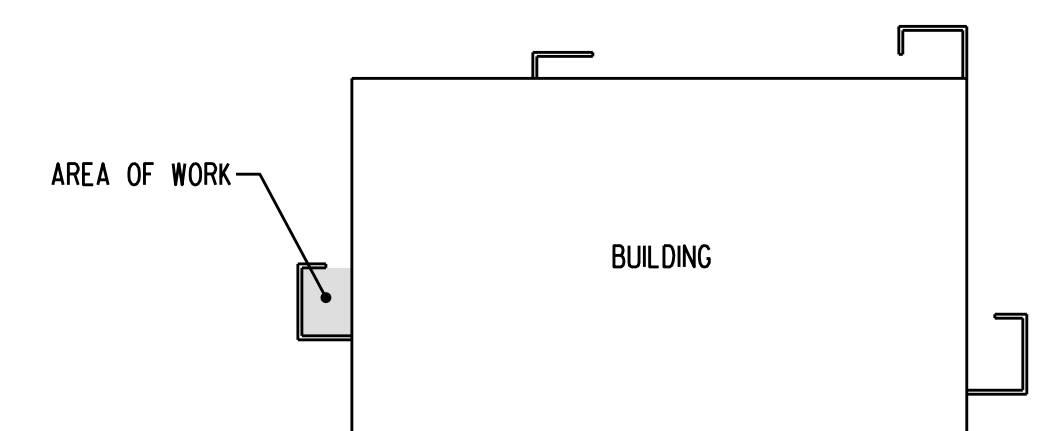
- ① CONNECT NEW SA AND RA DUCTS TO EXISTING SA/RA AT EXTERIOR WALL.
- ② PROVIDE NEW INSULATED METAL BLANK OFF AROUND DUCT AT WALL.
- ③ DISCHARGE CONDENSATE INTO NEW DRY WELL.
- ④ PROVIDE DISCHARGE PLENUM.
- ⑤ CONNECT NEW GAS PIPING AT VALVE. ROUTE GAS PIPING LINE SIZE TO NEW CONNECTION ON HVAC UNIT. SUPPORT PIPING AT 6' ON CENTER.



① **LARGE SCALE - PARTIAL FLOOR PLAN - NEW WORK - HVAC**
 SCALE: 1/4" = 1'-0"



LINE LEGEND	
	POINT OF CONNECTION
	EXISTING TO REMAIN
	NEW WORK



KEY-PLAN
 NOT TO SCALE

ELECTRICAL LEGEND			
LIGHTING FIXTURES (SYMBOLS VARY BASED ON FIXTURES TYPE)			
	LED ON "NORMAL" POWER		LIFE SAFETY EGRESS FIXTURE
	CEILING MOUNTED FIXTURE		EXIT LIGHT (ARROWS AS SHOWN)
	WALL MOUNTED FIXTURE		EMERGENCY BATTERY PACK-WALL
	TRACK LIGHTS: QUANTITY OF HEADS AS SHOWN		EMERGENCY BATTERY PACK-CEILING
LIGHTING CONTROL			
\$	SINGLE POLE SWITCH		CEILING MOUNTED ULTRASONIC OCCUPANCY SENSOR AND RELAY
\$3	THREE WAY SWITCH		CEILING/WALL MOUNTED INFRARED OCCUPANCY SENSOR AND RELAY
\$4	FOUR WAY SWITCH		CEILING MOUNTED COMBINATION INFRARED/ULTRASONIC OCCUPANCY SENSOR AND RELAY - VACANCY AUTO SHUT OFF
\$D	DIMMER SWITCH		SWITCHING PHOTOCELL (INTERIOR TYPE) F.C. NOTED
\$K	KEYED SWITCH		DIMMING PHOTOCELL (INTERIOR TYPE)
\$I	WALL MOUNTED SWITCH INFRARED OCCUPANCY SENSOR		EXTERIOR TYPE PHOTO SWITCH
\$L	LOW VOLTAGE OVERRIDE SWITCH		*PI INDICATES PILOT LIGHT
\$L1	SINGLE ZONE LOW VOLTAGE SWITCH		
\$L2	TWO ZONE LOW VOLTAGE SWITCH		
\$L4	FOUR ZONE LOW VOLTAGE SWITCH		
RECEPTACLES			
	DUPLEX RECEPTACLE - NORMAL		ELECTRIC WATER COOLER RECEPTACLE(GFCI)
	QUAD - NORMAL		WEATHER PROOF RECEPTACLE (GFCI)
	GFCI DUPLEX RECEPTACLE - NORMAL		HORIZONTALLY MOUNTED DUPLEX RECEPTACLE
	GFCI QUAD - NORMAL		SPECIAL - TYPE NOTED OR SHOWN
	FLOOR DUPLEX RECEPTACLE - NORMAL		CEILING SPECIAL - TYPE NOTED OR SHOWN
	FLOOR QUAD - NORMAL		RACEWAY RACEWAY
	CEILING DUPLEX RECEPTACLE - NORMAL		CLOCK OUTLET
	DUPLEX RECEPTACLE WITH INTEGRAL USB		ABOVE COUNTER DUPLEX RECEPTACLE (COORDINATE HEIGHT WITH ARCHITECT)
	TV DUPLEX RECEPTACLE		DUPLEX RECEPTACLE - GENERATOR CIRCUIT, RED IN COLOR
	DUPLEX RECEPTACLE MOUNTED IN RACEWAY		QUAD - GENERATOR CIRCUIT, RED IN COLOR
	DUPLEX RECEPTACLE - TAMPER PROOF		
CIRCUITS			
	CONDUIT CONCEALED IN CEILING OR WALL		RACEWAY EXPOSED
	CONDUIT IN GROUND, SLAB, OR UNDER FLOOR		FLEXIBLE RACEWAY
	HOMERUN - ONE ARROW PER CIRCUIT		CONDUIT UP
			CONDUIT DOWN
			CAP
			CONNECTION TO EQUIPMENT
GENERAL EQUIPMENT			
	PANELBOARD-250 VAC OR LESS SURFACE MOUNTED		SURGE SUPPRESSOR
	PANELBOARD-250 VAC OR LESS RECESSED		JUNCTION BOX - WALL/CEILING/FLOOR
	PANELBOARD-OVER 250 VAC SURFACE MOUNTED		MOTOR
	PANELBOARD-OVER 250 VAC RECESSED		EXHAUST FAN
	TRANSFORMER		COMBINATION STARTER AND DISCONNECT
	DISCONNECT SWITCH; "F" IF FUSED FRAME AMPS/POLES/NEMA TYPE FUSE PER MANUFACTURERS RECOMMENDATIONS		MANUAL STARTER AND MOTOR RATED SWITCH
			EMERGENCY PUSHBUTTON
			ENCLOSED CIRCUIT BREAKER
			ENCLOSED BREAKER-RECESSED IN WALL
			BACKBOARD
			CABLE TRAY
FIRE PROTECTION EQUIPMENT			
	FIRE ALARM PANEL		DUCT MOUNTED SMOKE DETECTOR
	FIRE ALARM ANNUNCIATOR		SMOKE DETECTOR: CEILING / WALL
	MANUAL PULL STATION		HEAT DETECTOR: CEILING / WALL
	AUDIO/VISUAL ALARM: CEILING/WALL		WATER FLOW SWITCH
	VISUAL ALARM: CEILING/WALL		WATER TAMPER SWITCH
	SPEAKER/VISUAL ALARM: CEILING/WALL		DOOR HOLDER
	SMOKE DETECTOR/SENSOR - BEAM TRANSMITTER		FIREMAN'S PHONE OUTLET
	SMOKE DETECTOR/SENSOR - BEAM RECEIVER		
COMMUNICATIONS			
	VOICE OUTLET, QUANTITY OF JACKS AS NOTED		MICROPHONE: FLOOR/WALL
	DATA OUTLET, QUANTITY OF JACKS AS NOTED		SPEAKER: CEILING/WALL
	COMBINATION VOICE/DATA OUTLET, QUANTITY OF VOICE/DATA JACKS AS NOTED		FIBER OUTLET
	FLOOR VOICE OUTLET, QUANTITY OF JACKS AS NOTED		TELEVISION OUTLET
	FLOOR DATA OUTLET, QUANTITY OF JACKS AS NOTED		BOX, STUB-UP, AND MODULAR PLATE W/ BLANKS
	FLOOR COMBINATION VOICE/DATA OUTLET, QUANTITY OF JACKS AS NOTED		WALL MOUNTED VOLUME CONTROL
	DATA OUTLET MOUNTED IN RACEWAY		INTERCOM CALL-IN STATION
			INTERCOM MASTER STATION
			MASTER CLOCK
			J-HOOK
			CABLE TRAY
LIGHTNING PROTECTION AND GROUNDING			
	GROUNDING CONDUCTOR- UNDER SLAB OR BELOW GRADE		GROUNDING CONDUCTOR- CONCEALED IN ROOF OR WALLS
	GROUND ROD - C IF CHEMICAL		GROUNDING CONDUCTOR- EXPOSED
	GROUND CONNECTION (SCHEMATIC)		AIR TERMINAL
			GROUNDING PLATE
SECURITY			
	CARD READER		SECURITY CAMERA: CEILING/WALL MOUNTED
	DOOR POSITION SENSOR		
	ELECTRIC STRIKE		

NBP ENGINEERS
NBP Engineers, Inc.
CONSULTANTS
316 CORPORATE PARKWAY
MACON, GEORGIA 31210
478-745-1691 www.nbpengineers.com

THIS DRAWING IS THE PROPERTY OF THE ENGINEER AND MAY NOT BE REPRODUCED OR USED IN WHOLE OR IN PART WITHOUT HIS WRITTEN PERMISSION. IT IS TO BE USED FOR THE PROJECT SPECIFICALLY IDENTIFIED HEREIN AND TO BE RETURNED UPON REQUEST.

SEAL

GEORGIA REGISTERED PROFESSIONAL ENGINEER
NBP Engineers, Inc. CDA#PE000774
CDA# Exp: 03/30/2026

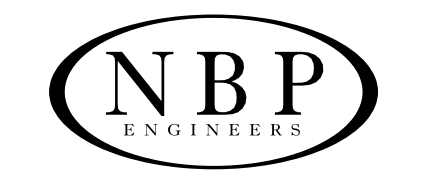
No.	REVISIONS/SUBMISSIONS	DATE

PROJECT TITLE:
**Perry Worrall Community Center
Packaged AC Replacement
City of Perry - Perry, Georgia**

SHEET TITLE:
LEGEND & SCHEDULES - ELECTRICAL

DESIGNED: TWY
DRAWN: LTF
CHECKED: TWY
DATE: 06.26.24
PROJECT NUMBER: 23031
SCALE: AS SHOWN
FILE PATH: P:\23031\23031e001.dgn
SHEET NUMBER: **E001**

BID SET



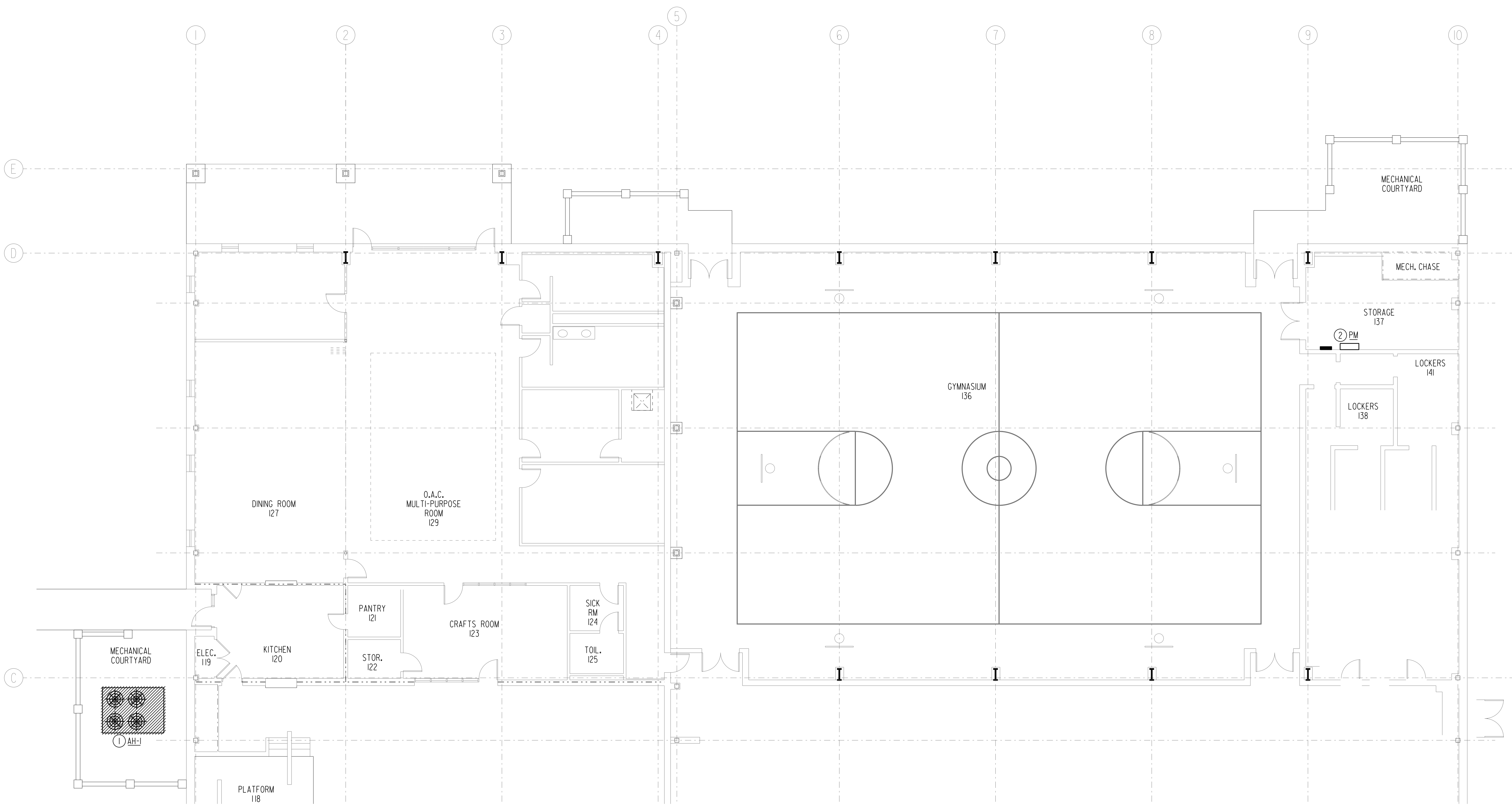
NBP Engineers, Inc.
CONSULTANTS
316 CORPORATE PARKWAY
MACON, GEORGIA 31210
478-745-1691 www.nbpengineers.com

THIS DRAWING IS THE PROPERTY OF THE ENGINEER AND MAY NOT BE REPRODUCED OR USED IN WHOLE OR IN PART WITHOUT HIS WRITTEN PERMISSION. IT IS TO BE USED FOR THE PROJECT SPECIFICALLY IDENTIFIED HEREIN AND TO BE RETURNED UPON REQUEST.



NBP Engineers, Inc. COA#PE000774
COA# Expires: 6/30/2026

No.	REVISIONS/SUBMISSIONS	DATE



1 PARTIAL FLOOR PLAN - DEMOLITION - ELECTRICAL
SCALE: 1/8" = 1'-0"
8 0 4 8 16
 N

NOTES: (THIS SHEET ONLY)

- ① REMOVE ALL EXISTING ELECTRICAL ASSOCIATED WITH AIR HANDLING UNIT BEING REPLACED. REMOVE EXISTING 200 AMP DISCONNECT, EXISTING CONDUIT BETWEEN THE UNIT AND EXISTING PANEL PM SHALL BE REMOVED WHERE EXPOSED AND CUT FLUSH WITH SLAB IN AREAS WHERE NOT ACCESSIBLE. REMOVE ALL CONDUCTORS. THERE IS CONCERN THAT THE EXISTING UNDER SLAB CONDUIT MAY NOT STILL BE VIABLE. SO NEW OVERHEAD CONDUIT WILL BE REQUIRED.
- ② EXISTING GE SPECTRA SERIES 1000 AMP, 208 VOLT, 3 PHASE PANEL PM. REMOVE EXISTING 150A/3P CIRCUIT BREAKER SERVING AIR HANDLING UNIT BEING REMOVED.

NBP Project No.: 23021

Perry Worrall Community Center
Packaged AC Replacement
City of Perry - Perry, Georgia

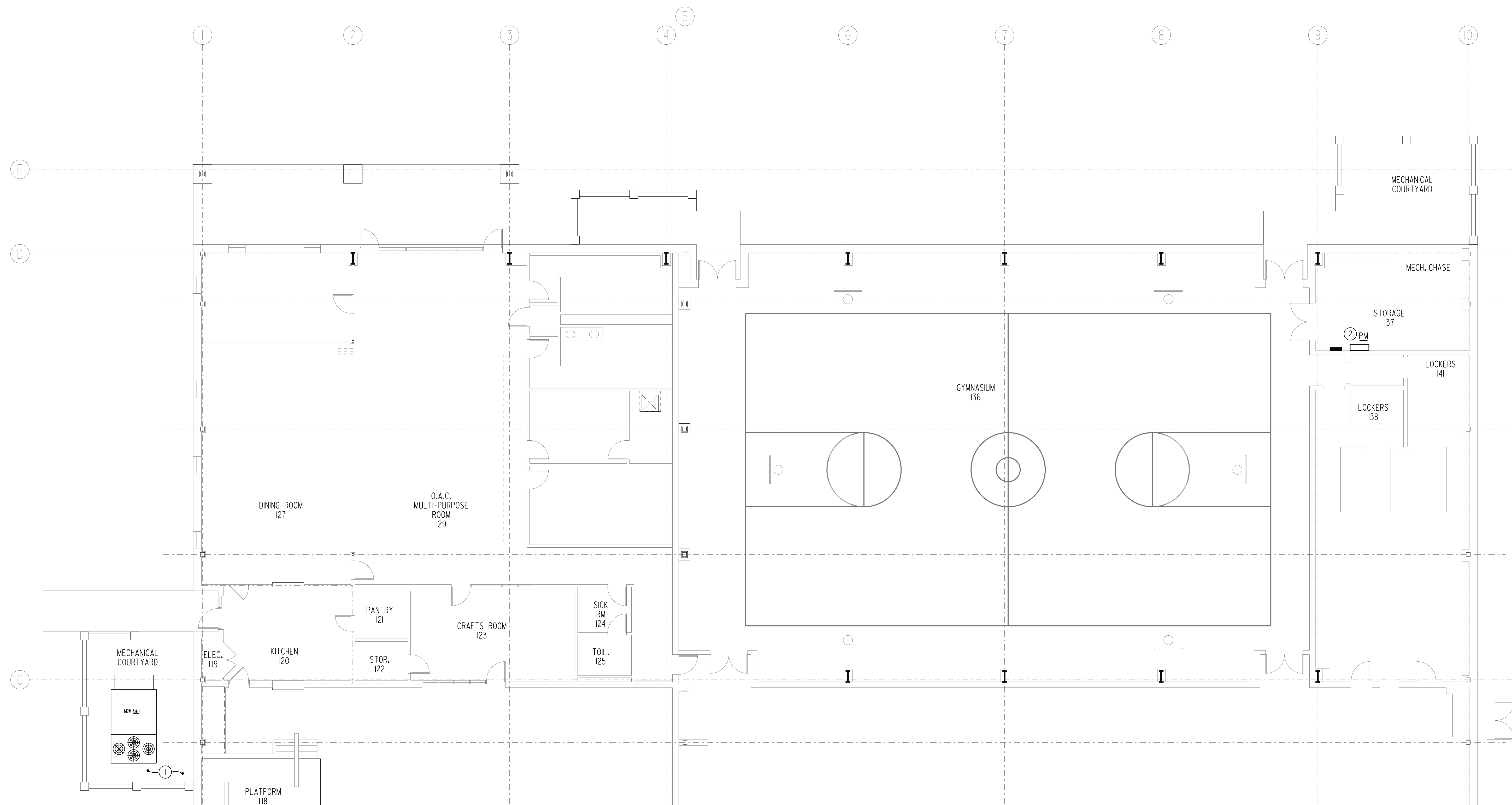
PROJECT TITLE:

SHEET TITLE:
PARTIAL FLOOR PLAN - DEMOLITION - ELECTRICAL

DESIGNED: TWY
DRAWN: LTF
CHECKED: TWY
DATE: 06.26.24
PROJECT NUMBER: 23031
SCALE: AS SHOWN
FILE PATH: P:\2303\23031e101.dgn
SHEET NUMBER:

E101

BID SET



1 PARTIAL FLOOR PLAN - NEW WORK - ELECTRICAL
SCALE: 1/8" = 1'-0"
8 0 4 8 16
N

NOTES: (THIS SHEET ONLY)

- ① PROVIDE NEW 208 VOLT, 3 PHASE POWER TO NEW AIR HANDLING UNIT. PROVIDE A NEW 200A/3P/3R HEAVY DUTY RATED FUSED DISCONNECT IN SIMILAR LOCATION AS THE DISCONNECT THAT WAS REMOVED. PROVIDE NEW 4*3/0 AWG, #4G COPPER CONDUCTORS IN NEW TWO INCH CONDUIT BACK TO EXISTING PANEL PM. ROUTE NEW CONDUITS UP THROUGH GYMNASIUM AT THE STRUCTURE. MAKE ALL FINAL CONNECTIONS TO THE NEW AIR HANDLING UNIT. ALL NEW CONDUIT SHALL BE CONCEALED WHERE POSSIBLE. WHERE NOT CONCEALED PAINT CONDUIT TO MATCH SURROUNDING FINISHES.
- ② PROVIDE NEW 175A/3P CIRCUIT BREAKER IN EXISTING 1000 AMP, 208 VOLT, 3 PHASE GE SPECTRA SERIES PANEL PM. NEW BREAKER SHALL MATCH EXISTING PANEL AIC RATING.

NBP ENGINEERS
NBP Engineers, Inc.
CONSULTANTS
316 CORPORATE PARKWAY
MACON, GEORGIA 31210
478-745-1691 www.nbpengineers.com

THIS DRAWING IS THE PROPERTY OF THE ENGINEER AND MAY NOT BE REPRODUCED OR USED IN WHOLE OR IN PART WITHOUT HIS WRITTEN PERMISSION. IT IS TO BE USED FOR THE PROJECT SPECIFICALLY IDENTIFIED HEREIN AND TO BE RETURNED UPON REQUEST.

SEAL
REGISTERED PROFESSIONAL ENGINEER
STATE OF GEORGIA
W. TROTTER
NBP Engineers, Inc. CO#PEF00774
CEM. Expires: 6/30/2026

No.	REVISIONS/SUBMISSIONS	DATE

NBP Project No.: 23021

Perry Worrall Community Center

Packaged AC Replacement
City of Perry - Perry, Georgia

PROJECT TITLE:

SHEET TITLE:
PARTIAL FLOOR PLAN - NEW WORK - ELECTRICAL

DESIGNED:
TWT

DRAWN:
LTF

CHECKED:
TWT

DATE:
06.26.24

PROJECT NUMBER:
23031

SCALE:
AS SHOWN

FILE PATH:
P:\2303\23031e201.dgn

SHEET NUMBER:

E201