



# PERRY SEWER MASTER PLAN

SOUTH AND EAST PERRY SERVICE AREAS

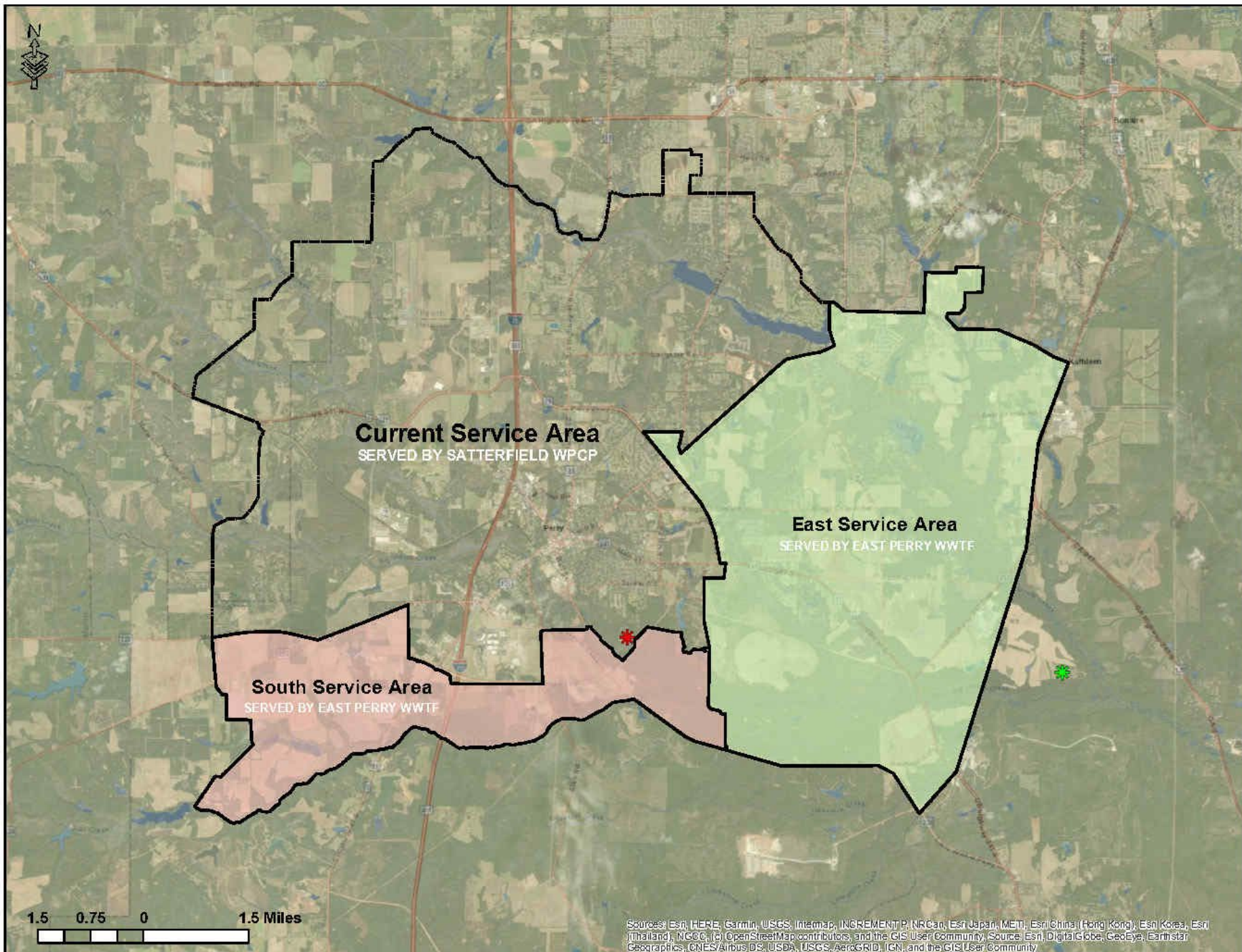


**GWES, LLC**



FIGURE 1

# SANITARY SEWER PROPOSED SERVICE AREA MAP




### MAP LEGEND

-  Current Service Area
-  East Service Area
-  South Service Area
-  Frank Satterfield WPCP
-  Proposed WWTF Site Location

Sources: Esri, HERE, Garmin, USGS, Intermap, INCREMENT P, NRCan, Esri Japan, METI, Esri China (Hong Kong), Esri Korea, Esri (Thailand), NGCC, (c) OpenStreetMap contributors, and the GIS User Community, Source: Esri, DigitalGlobe, GeoEye, Earthstar Geographics, CNES/Airbus DS, USDA, USGS, AeroGRID, IGN, and the GIS User Community



FIGURE 4

**SOUTH SERVICE AREA  
MAP****MAP LEGEND** South Service Area

Approximately 6,500 acres

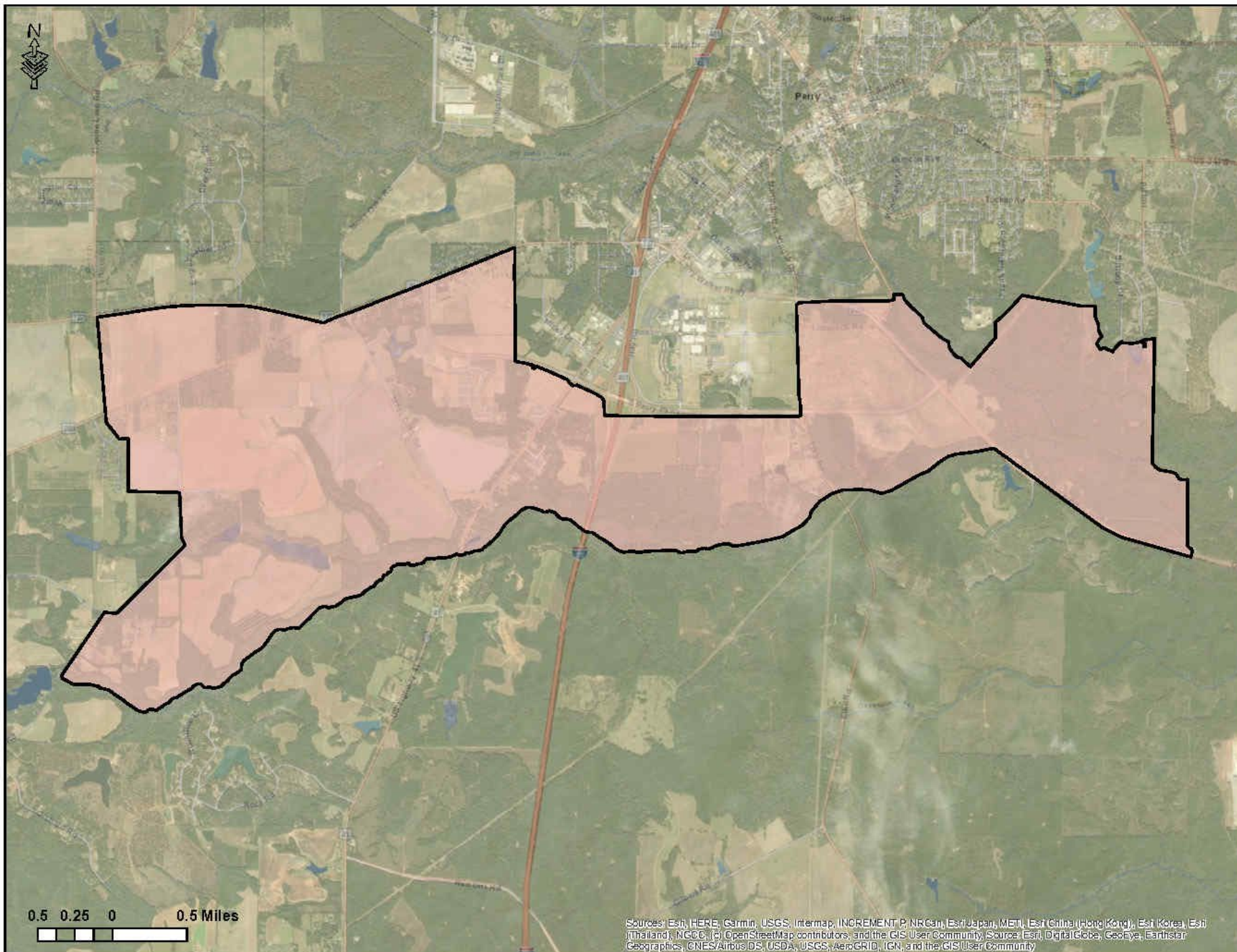





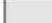












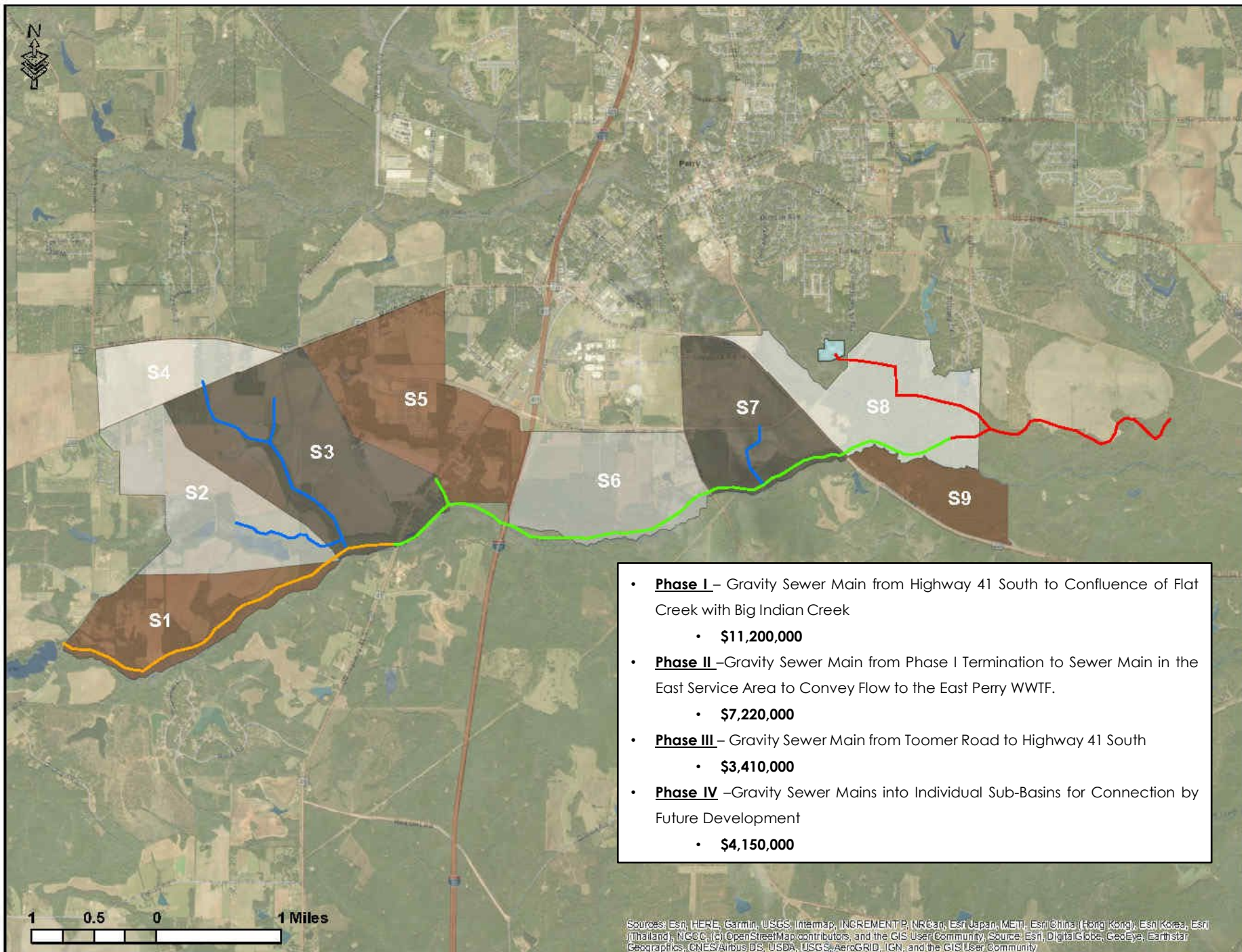
FIGURE 17

**SOUTH SERVICE AREA  
PHASING MAP**

**MAP LEGEND**

-  Phase I - SS1 Piping
-  Phase II - SS2 Piping
-  Phase III - SS3 Piping
-  Phase IV - SS4 Piping
-  Sub-Basin S1
-  Sub-Basin S2
-  Sub-Basin S3
-  Sub-Basin S4
-  Sub-Basin S5
-  Sub-Basin S6
-  Sub-Basin S7
-  Sub-Basin S8
-  Sub-Basin S9
-  Satterfield WPCP

- **Phase I** – Gravity Sewer Main from Highway 41 South to Confluence of Flat Creek with Big Indian Creek
  - **\$11,200,000**
- **Phase II** – Gravity Sewer Main from Phase I Termination to Sewer Main in the East Service Area to Convey Flow to the East Perry WWTF.
  - **\$7,220,000**
- **Phase III** – Gravity Sewer Main from Toomer Road to Highway 41 South
  - **\$3,410,000**
- **Phase IV** – Gravity Sewer Mains into Individual Sub-Basins for Connection by Future Development
  - **\$4,150,000**

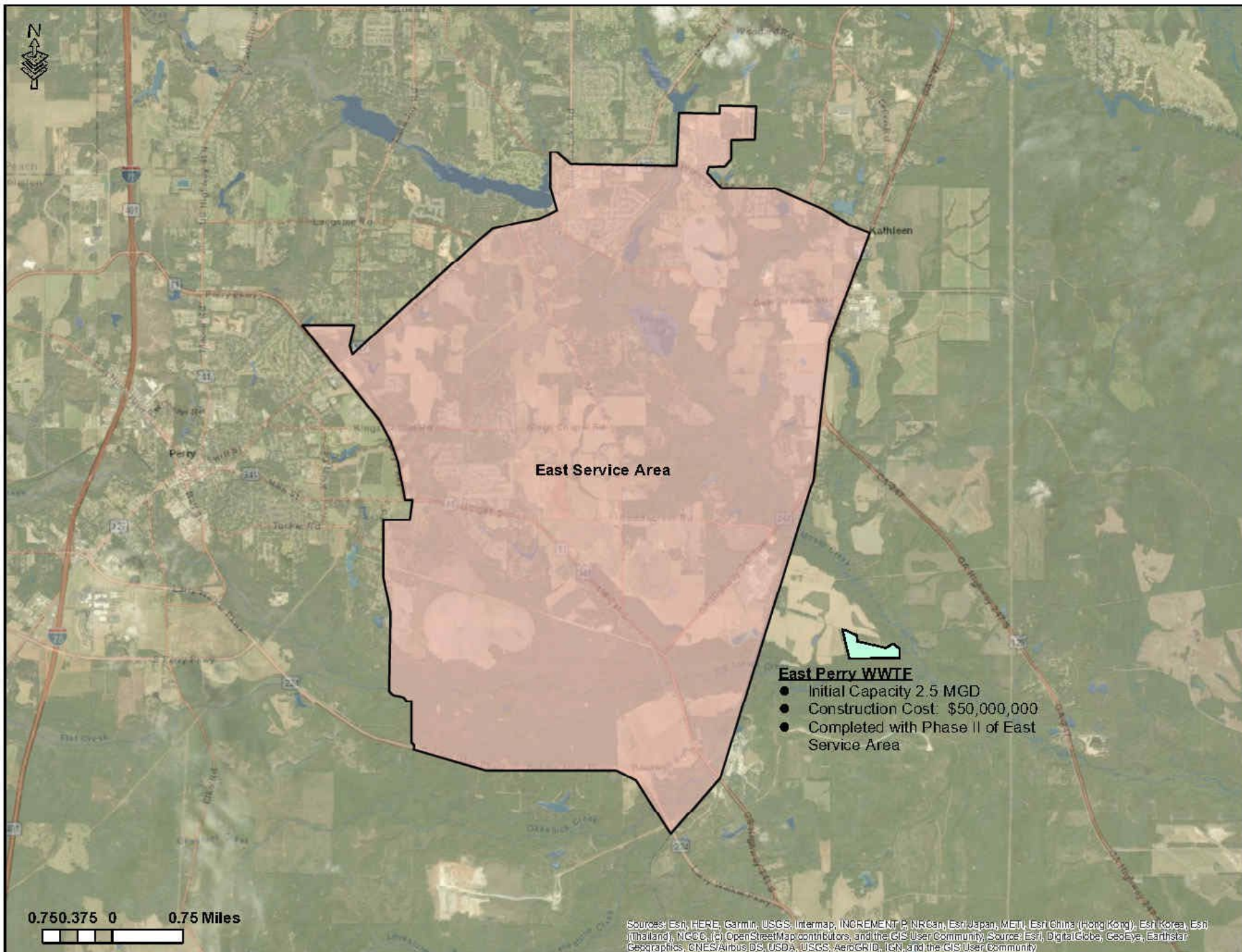


Sources: Esri, HERE, Garmin, USGS, Intermap, INCREMENT P, NRCan, Esri Japan, METI, Esri China (Hong Kong), Esri Korea, Esri (Thailand), NGCC, (c) OpenStreetMap contributors, and the GIS User Community, Source: Esri, DigitalGlobe, GeoEye, Earthstar Geographics, CNES/Airbus DS, USDA, USGS, AeroGRID, IGN, and the GIS User Community




FIGURE 23

# EAST SERVICE AREA MAP



### MAP LEGEND

-  East Service Area
- Approximately 17,500 acres













0.750.375 0 0.75 Miles

Sources: Esri, HERE, Garmin, USGS, Intermap, INCREMENT P, NRCan, Esri/Japan, METI, Esri/China (Hong Kong), Esri/Korea, Esri/Thailand), NGCC, (c) OpenStreetMap contributors, and the GIS User Community, Source: Esri, DigitalGlobe, GeoEye, Earthstar Geographics, CNES/Airbus DS, USDA, USGS, AeroGRID, IGN, and the GIS User Community



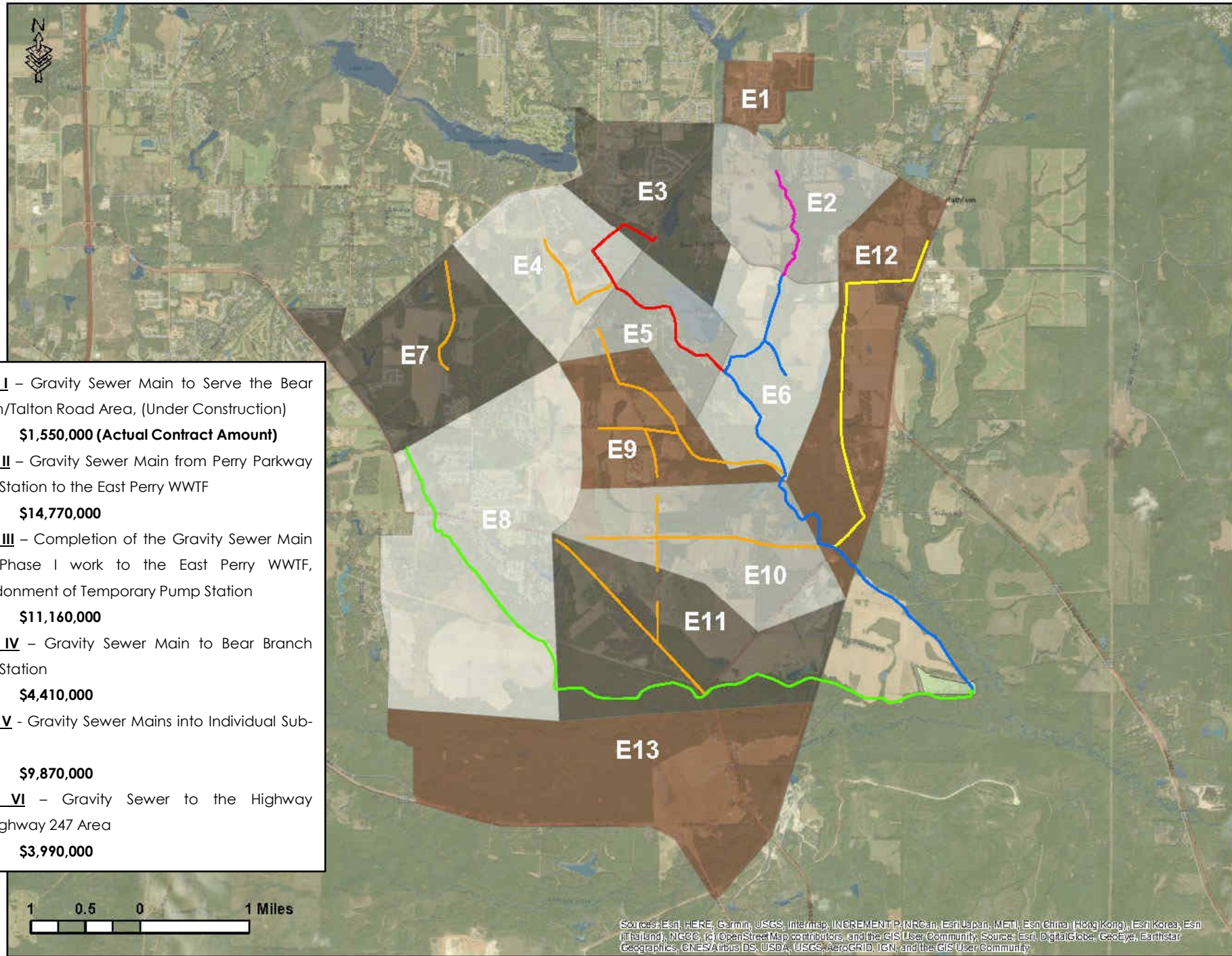
# EAST SERVICE AREA PHASING MAP

## MAP LEGEND

-  Phase I - ES1 Piping
-  Phase II - ES2 Piping
-  Phase III - ES3 Piping
-  Phase IV - ES4 Piping
-  Phase V - ES5 Piping
-  Phase VI - ES6 Piping
-  Sub-Basin E1,9,12,13
-  Sub-Basin E2,5,10
-  Sub-Basin E3,7,11
-  Sub-Basin E4,6,8
-  Proposed WWTF Location
-  Satterfield WPCP



- **Phase I** – Gravity Sewer Main to Serve the Bear Branch/Talton Road Area, (Under Construction)
  - **\$1,550,000 (Actual Contract Amount)**
- **Phase II** – Gravity Sewer Main from Perry Parkway Pump Station to the East Perry WWTF
  - **\$14,770,000**
- **Phase III** – Completion of the Gravity Sewer Main from Phase I work to the East Perry WWTF, Abandonment of Temporary Pump Station
  - **\$11,160,000**
- **Phase IV** – Gravity Sewer Main to Bear Branch Pump Station
  - **\$4,410,000**
- **Phase V** - Gravity Sewer Mains into Individual Sub-Basins
  - **\$9,870,000**
- **Phase VI** – Gravity Sewer to the Highway 127/Highway 247 Area
  - **\$3,990,000**



Sources: Esri, HERE, Garmin, USGS, Intermap, INCREMENT P, NRCan, Esri Japan, METI, Esri China (Hong Kong), Esri Korea, Esri (Ireland), NGCC, (c) OpenStreetMap contributors, and the GIS User Community. Source: Esri, DigitalGlobe, GeoEye, Earthstar Geographics, CNES/Airbus DS, USDA, USGS, AeroGRID, IGN, and the GIS User Community.